



ELECTRONIC COPY

LABORATORY GROWN DIAMOND REPORT

July 27, 2024  
IGI Report Number LG644446413  
Description LABORATORY GROWN DIAMOND  
Shape and Cutting Style CUT CORNERED RECTANGULAR MODIFIED BRILLIANT  
Measurements 7.60 X 5.83 X 4.05 MM

GRADING RESULTS

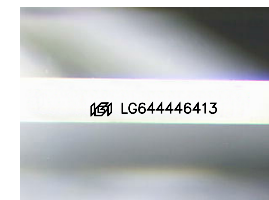
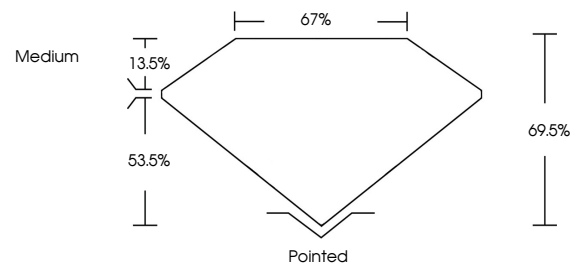
Carat Weight 1.55 CARAT  
Color Grade F  
Clarity Grade VVS 2

ADDITIONAL GRADING INFORMATION

Polish EXCELLENT  
Symmetry EXCELLENT  
Fluorescence NONE  
Inscription(s) LG644446413

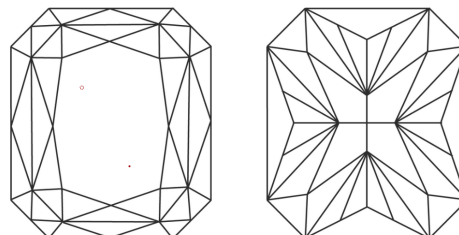
Comments: This Laboratory Grown Diamond was created by Chemical Vapor Deposition (CVD) growth process.  
Type IIa

PROPORTIONS



Sample Image Used

CLARITY CHARACTERISTICS



KEY TO SYMBOLS

Red symbols indicate internal characteristics.  
Green symbols indicate external characteristics.

COLOR

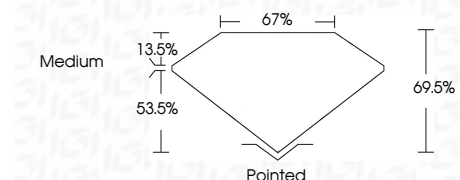
D E F G H I J Faint Very Light Light

CLARITY

IF VVS 1-2 VS 1-2 SI 1-2 I 1-3  
Internally Flawless Very Very Slightly Included Very Slightly Included Slightly Included Included



July 27, 2024  
IGI Report Number LG644446413  
Description LABORATORY GROWN DIAMOND  
Shape and Cutting Style CUT CORNERED RECTANGULAR MODIFIED BRILLIANT  
Measurements 7.60 X 5.83 X 4.05 MM  
GRADING RESULTS  
Carat Weight 1.55 CARAT  
Color Grade F  
Clarity Grade VVS 2



ADDITIONAL GRADING INFORMATION

Polish EXCELLENT  
Symmetry EXCELLENT  
Fluorescence NONE  
Inscription(s) LG644446413  
Comments: This Laboratory Grown Diamond was created by Chemical Vapor Deposition (CVD) growth process.  
Type IIa



July 27, 2024  
IGI Report No LG644446413  
CUT CORNERED RECT. MODIFIED BRILLIANT  
7.60 X 5.83 X 4.05 MM  
1.55 CARAT F  
VVS 2  
69.5%  
67%  
Medium  
Pointed  
EXCELLENT  
EXCELLENT  
NONE  
None  
 LG644446413  
Comments: This Laboratory Grown Diamond was created by Chemical Vapor Deposition (CVD) growth process.  
Type IIa