



ELECTRONIC COPY

LG644447367
Report verification at igi.org



July 30, 2024

IGI Report Number **LG644447367**

Description **LABORATORY GROWN DIAMOND**

Shape and Cutting Style **EMERALD CUT**

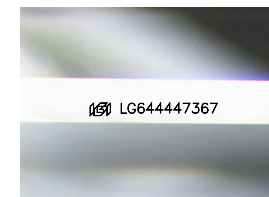
Measurements **10.99 X 7.58 X 5.05 MM**

GRADING RESULTS

Carat Weight **4.08 CARATS**

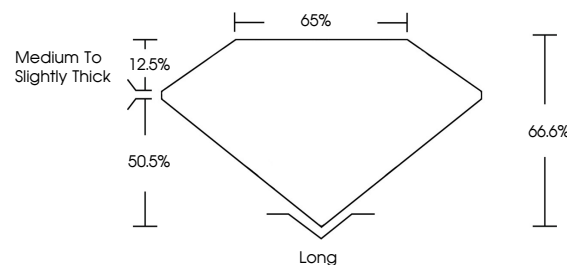
Color Grade **E**

Clarity Grade **SI 1**

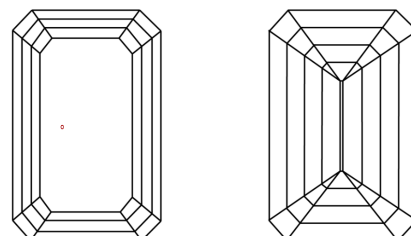


Sample Image Used

PROPORTIONS



CLARITY CHARACTERISTICS



KEY TO SYMBOLS

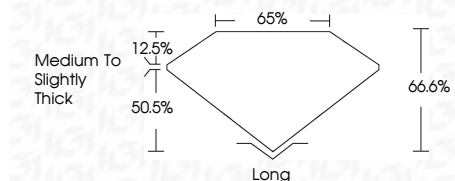
Red symbols indicate internal characteristics.
Green symbols indicate external characteristics.

COLOR

D E F G H I J Faint Very Light Light

CLARITY

IF	VS ¹⁻²	VS ¹⁻²	SI ¹⁻²	I ¹⁻³
Internally Flawless	Very Very Slightly Included	Very Slightly Included	Slightly Included	Included



ADDITIONAL GRADING INFORMATION

Polish **EXCELLENT**

Symmetry **EXCELLENT**

Fluorescence **NONE**

Inscription(s) **IGI LG644447367**

Comments: This Laboratory Grown Diamond was created by Chemical Vapor Deposition (CVD) growth process.
Type IIa



IGI



July 30, 2024
IGI Report No. LG644447367
EMERALD CUT

4.08 CARATS
E

10.99 X 7.58 X 5.05 MM

Carat Weight
Color Grade
Clarity Grade
Depth
Table
Girdle
Medium to Slightly Thick

SI 1
66.6%
65%

Culet
Polish
Symmetry
Fluorescence
Inscription(s)

Long
EXCELLENT
EXCELLENT
NONE
IGI LG644447367

Comments: This Laboratory Grown Diamond was created by Chemical Vapor Deposition (CVD) growth process.
Type IIa