

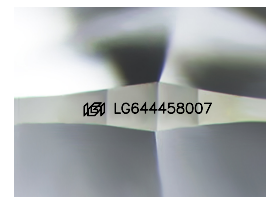
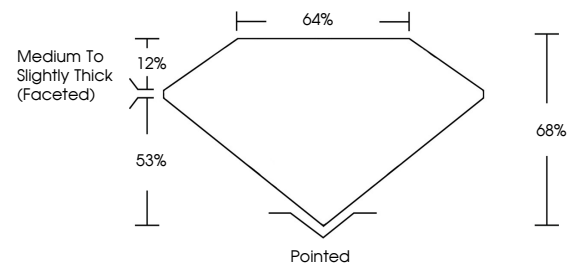


**ELECTRONIC COPY**

## LABORATORY GROWN DIAMOND REPORT

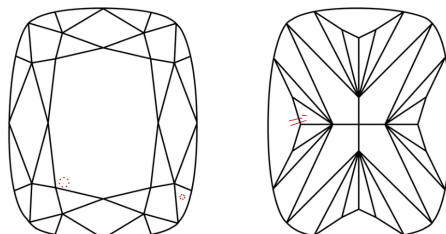
LG644458007  
Report verification at [igi.org](http://igi.org)

## PROPORTIONS



Sample Image Used

## CLARITY CHARACTERISTICS



## KEY TO SYMBOLS

Red symbols indicate internal characteristics.  
Green symbols indicate external characteristics.

## COLOR

D E F G H I J Faint Very Light Light

## CLARITY

IF	VVS <sup>1-2</sup>	VS <sup>1-2</sup>	SI <sup>1-2</sup>	I <sup>1-3</sup>
Internally Flawless	Very Very Slightly Included	Very Slightly Included	Slightly Included	Included



© IGI 2020, International Gemological Institute

FD - 10 20

**www.igi.org**

## LABORATORY GROWN DIAMOND REPORT



July 17, 2024

IGI Report Number **LG644458007**

Description	LABORATORY GROWN DIAMOND
-------------	--------------------------

Shape and Cutting Style **CUSHION BRILLIANT**

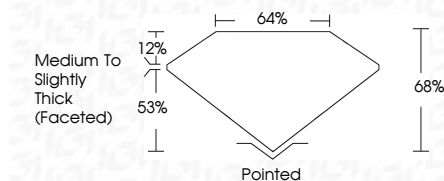
Measurements 7.11 X 5.10 X 3.47 MM

## GRADING RESULTS

Carat Weight 1.00 CARAT

Color Grade E

Clarity Grade SI 1



### ADDITIONAL GRADING INFORMATION

Polish EXCELLENT

Symmetry **EXCELLENT**Fluorescence **NONE**Inscription(s)  LG644458007

Comments: This Laboratory Grown Diamond was created by Chemical Vapor Deposition (CVD) growth process.  
Type IIa



July 17, 2024  
IGI Report No LG64458007  
CUSHION BRILLIANT

1.11 X 5.10 X 3.47 MM	1.00 CARAT	
Carat Weight		
Color Grade	S11	
Clarity Grade	65%	
Depth	64%	
Table	Medium To Slightly Thick (Faceted)	
Grade		
Culet	Pointed	
Polish	EXCELLENT	
Symmetry	EXCELLENT	
Fluorescence	NONE	
Comments(1)	4011544445707	

**Comments:**  
This Laboratory Grown Diamond was  
created by Chemical Vapor Deposition  
(CVD) growth process.