



ELECTRONIC COPY

LG644458109
Report verification at igi.org



July 17, 2024

IGI Report Number **LG644458109**

Description **LABORATORY GROWN DIAMOND**

Shape and Cutting Style **EMERALD CUT**

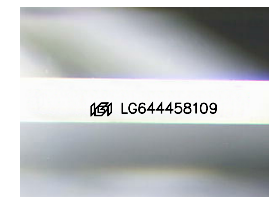
Measurements **6.89 X 4.79 X 3.22 MM**

GRADING RESULTS

Carat Weight **1.06 CARAT**

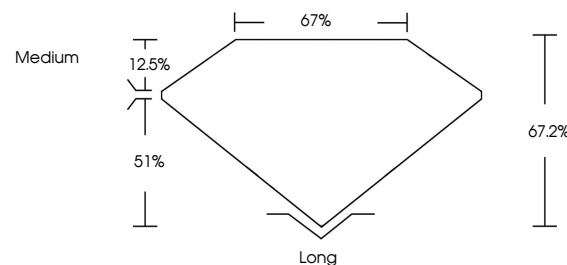
Color Grade **D**

Clarity Grade **VVS 2**

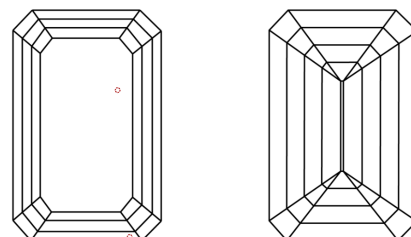


Sample Image Used

PROPORTIONS



CLARITY CHARACTERISTICS



KEY TO SYMBOLS

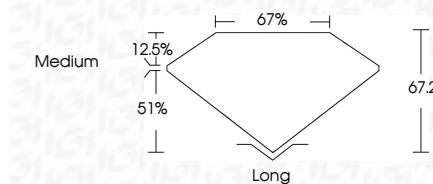
Red symbols indicate internal characteristics.
Green symbols indicate external characteristics.

COLOR

D E F G H I J Faint Very Light Light

CLARITY

IF	VS ¹⁻²	VS ¹⁻²	SI ¹⁻²	I ¹⁻³
Internally Flawless	Very Very Slightly Included	Very Slightly Included	Slightly Included	Included



ADDITIONAL GRADING INFORMATION

Polish **VERY GOOD**

Symmetry **EXCELLENT**

Fluorescence **NONE**

Inscription(s) **IGI LG644458109**

Comments: This Laboratory Grown Diamond was created by Chemical Vapor Deposition (CVD) growth process.
Type IIa



IGI



July 17, 2024
IGI Report No LG644458109
EMERALD CUT
6.89 X 4.79 X 3.22 MM
Carat Weight **1.06 CARAT**
Color Grade **D**
Clarity Grade **VVS 2**
Depth **51.2%**
Table **67%**
Girdle **Medium**
Culet **Long**
Polish **VERY GOOD**
Symmetry **EXCELLENT**
Fluorescence **NONE**
Inscription(s) **IGI LG644458109**
Comments: This Laboratory Grown Diamond was created by Chemical Vapor Deposition (CVD) growth process.
Type IIa