



**ELECTRONIC COPY**

LG644463935  
Report verification at igi.org



October 1, 2024

IGI Report Number **LG644463935**

Description **LABORATORY GROWN DIAMOND**

Shape and Cutting Style **PRINCESS CUT**

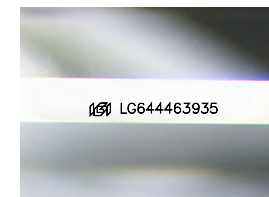
Measurements **9.44 X 9.36 X 6.53 MM**

**GRADING RESULTS**

Carat Weight **5.09 CARATS**

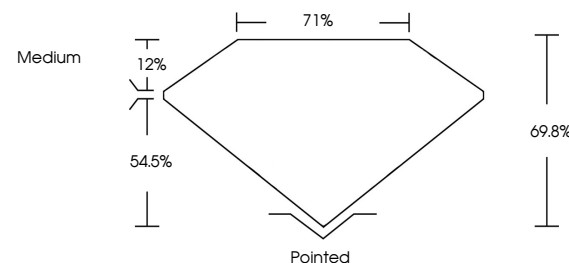
Color Grade **F**

Clarity Grade **VVS 2**

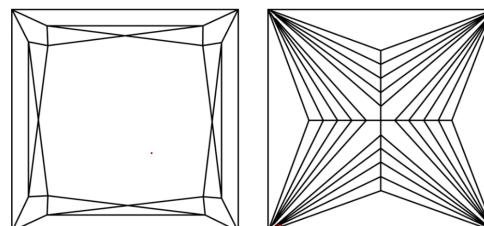


Sample Image Used

**PROPORTIONS**



**CLARITY CHARACTERISTICS**



**KEY TO SYMBOLS**

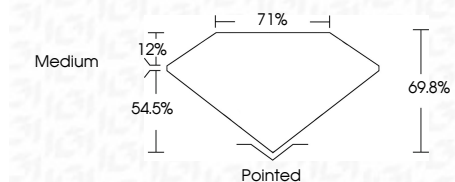
Red symbols indicate internal characteristics.  
Green symbols indicate external characteristics.

**COLOR**

D E F G H I J Faint Very Light Light

**CLARITY**

IF	VS <sup>1-2</sup>	VS <sup>1-2</sup>	SI <sup>1-2</sup>	I <sup>1-3</sup>
Internally Flawless	Very Very Slightly Included	Very Slightly Included	Slightly Included	Included



**ADDITIONAL GRADING INFORMATION**

Polish **EXCELLENT**

Symmetry **EXCELLENT**

Fluorescence **NONE**

Inscription(s) **IGI LG644463935**

Comments: This Laboratory Grown Diamond was created by Chemical Vapor Deposition (CVD) growth process.  
Type IIa



**IGI**



October 1, 2024  
IGI Report No LG644463935  
PRINCESS CUT

5.09 CARATS  
F

9.44 X 9.36 X 6.53 MM  
VVS 2  
69.8%  
71%  
Medium

Pointed  
EXCELLENT  
EXCELLENT  
NONE  
IGI LG644463935

Comments: This Laboratory Grown Diamond was created by Chemical Vapor Deposition (CVD) growth process.  
Type IIa