



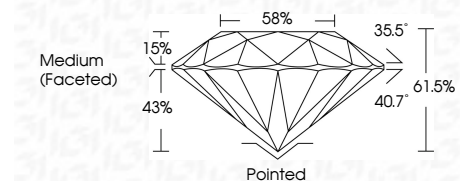
ELECTRONIC COPY

LG644464153
Report verification at igi.org



October 3, 2024
IGI Report Number **LG644464153**
Description **LABORATORY GROWN DIAMOND**
Shape and Cutting Style **ROUND BRILLIANT**
Measurements **6.54 - 6.56 X 4.03 MM**

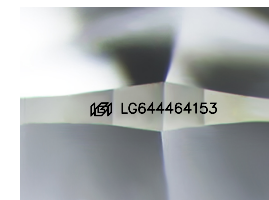
GRADING RESULTS
Carat Weight **1.07 CARAT**
Color Grade **F**
Clarity Grade **VVS 2**
Cut Grade **IDEAL**



ADDITIONAL GRADING INFORMATION
Polish **EXCELLENT**
Symmetry **EXCELLENT**
Fluorescence **NONE**
Inscription(s) **IGI LG644464153**
Comments: This Laboratory Grown Diamond was created by Chemical Vapor Deposition (CVD) growth process. Type IIa

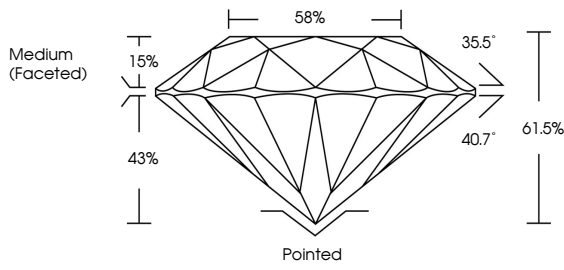


October 3, 2024
IGI Report No **LG644464153**
ROUND BRILLIANT
6.54 - 6.56 X 4.03 MM
Carat Weight **1.07 CARAT**
Color Grade **F**
Clarity Grade **VVS 2**
Cut Grade **IDEAL**
Depth **61.5%**
Table **15%**
Girdle **Medium (Faceted)**
Culet **Pointed**
Polish **EXCELLENT**
Symmetry **EXCELLENT**
Fluorescence **NONE**
Inscription(s) **IGI LG644464153**
Comments: This Laboratory Grown Diamond was created by Chemical Vapor Deposition (CVD) growth process. Type IIa

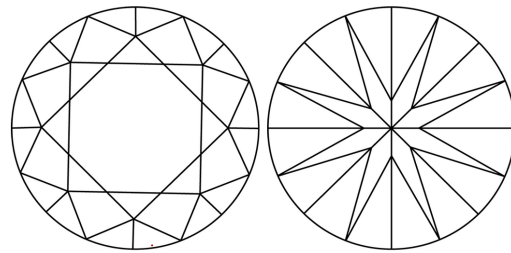


Sample Image Used

PROPORTIONS



CLARITY CHARACTERISTICS



KEY TO SYMBOLS
Red symbols indicate internal characteristics.
Green symbols indicate external characteristics.

COLOR

D E F G H I J Faint Very Light Light

CLARITY

IF	VS ¹⁻²	VS ¹⁻²	SI ¹⁻²	I ¹⁻³
Internally Flawless	Very Very Slightly Included	Very Slightly Included	Slightly Included	Included

