



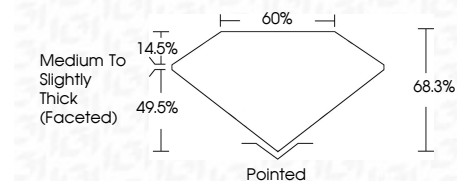
ELECTRONIC COPY

LG644467351
Report verification at igi.org



July 18, 2024
IGI Report Number LG644467351
Description LABORATORY GROWN DIAMOND
Shape and Cutting Style CUSHION BRILLIANT
Measurements 9.95 X 7.76 X 5.30 MM

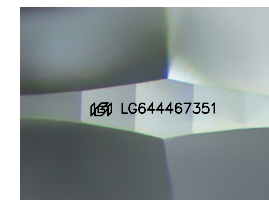
GRADING RESULTS
Carat Weight 3.10 CARATS
Color Grade E
Clarity Grade VS 1



ADDITIONAL GRADING INFORMATION
Polish EXCELLENT
Symmetry EXCELLENT
Fluorescence NONE
Inscription(s) IGI LG644467351
Comments: This Laboratory Grown Diamond was created by Chemical Vapor Deposition (CVD) growth process. Type IIa

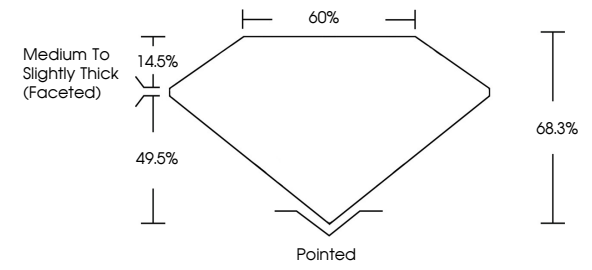


July 18, 2024
IGI Report No LG644467351
CUSHION BRILLIANT
9.95 X 7.76 X 5.30 MM
3.10 CARATS E
Color Grade E
Clarity Grade VS 1
Depth 68.3%
Table 60%
Girdle Medium to Slightly Thick (Faceted)
Culet Pointed
Polish EXCELLENT
Symmetry EXCELLENT
Fluorescence NONE
Inscription(s) IGI LG644467351
Comments: This Laboratory Grown Diamond was created by Chemical Vapor Deposition (CVD) growth process. Type IIa

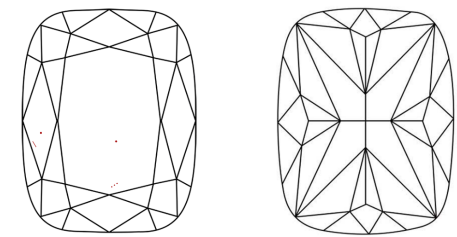


Sample Image Used

PROPORTIONS



CLARITY CHARACTERISTICS



KEY TO SYMBOLS

Red symbols indicate internal characteristics.
Green symbols indicate external characteristics.

COLOR

D E F G H I J Faint Very Light Light

CLARITY

IF VS 1-2 VS 1-2 SI 1-2 I 1-3
Internally Flawless Very Very Slightly Included Very Slightly Included Slightly Included Included



July 18, 2024
IGI Report Number LG644467351
Description LABORATORY GROWN DIAMOND
Shape and Cutting Style CUSHION BRILLIANT
Measurements 9.95 X 7.76 X 5.30 MM
GRADING RESULTS
Carat Weight 3.10 CARATS
Color Grade E
Clarity Grade VS 1
ADDITIONAL GRADING INFORMATION
Polish EXCELLENT
Symmetry EXCELLENT
Fluorescence NONE
Inscription(s) IGI LG644467351

Comments: This Laboratory Grown Diamond was created by Chemical Vapor Deposition (CVD) growth process. Type IIa