



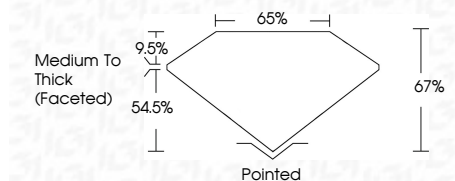
ELECTRONIC COPY

LG644467636 Report verification at igi.org



July 19, 2024 IGI Report Number LG644467636 Description LABORATORY GROWN DIAMOND Shape and Cutting Style CUSHION BRILLIANT Measurements 7.05 X 5.43 X 3.64 MM

GRADING RESULTS Carat Weight 1.04 CARAT Color Grade E Clarity Grade VVS 2

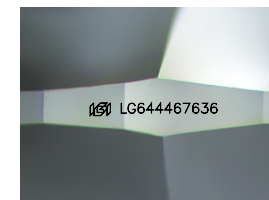


ADDITIONAL GRADING INFORMATION Polish EXCELLENT Symmetry EXCELLENT Fluorescence NONE Inscription(s) IGI LG644467636 Comments: This Laboratory Grown Diamond was created by Chemical Vapor Deposition (CVD) growth process. Type IIa



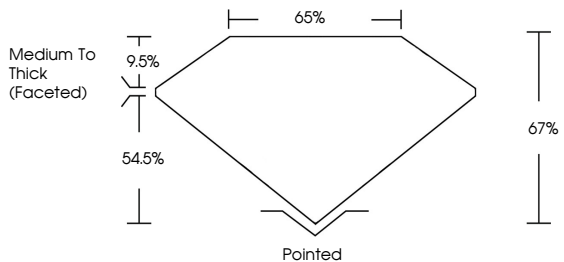
July 19, 2024 IGI Report No LG644467636 CUSHION BRILLIANT 1.04 CARAT E VVS 2 67% 65% Medium To Thick (Faceted) Pointed EXCELLENT EXCELLENT NONE NONE IGI LG644467636

Comments: This Laboratory Grown Diamond was created by Chemical Vapor Deposition (CVD) growth process. Type IIa

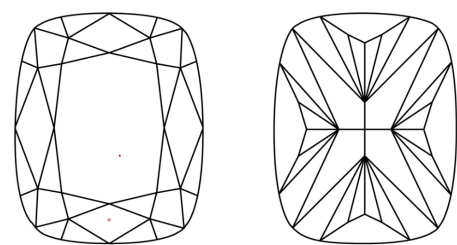


Sample Image Used

PROPORTIONS



CLARITY CHARACTERISTICS



KEY TO SYMBOLS Red symbols indicate internal characteristics. Green symbols indicate external characteristics.

COLOR

Table with color categories: D, E, F, G, H, I, J, Faint, Very Light, Light

CLARITY

Table with clarity categories: IF, VVS 1-2, VS 1-2, SI 1-2, I 1-3, Internally Flawless, Very Very Slightly Included, Very Slightly Included, Slightly Included, Included



July 19, 2024 IGI Report Number LG644467636 Description LABORATORY GROWN DIAMOND Shape and Cutting Style CUSHION BRILLIANT Measurements 7.05 X 5.43 X 3.64 MM

GRADING RESULTS Carat Weight 1.04 CARAT Color Grade E Clarity Grade VVS 2

ADDITIONAL GRADING INFORMATION Polish EXCELLENT Symmetry EXCELLENT Fluorescence NONE Inscription(s) IGI LG644467636

Comments: This Laboratory Grown Diamond was created by Chemical Vapor Deposition (CVD) growth process. Type IIa