



**INTERNATIONAL
GEMOLOGICAL
INSTITUTE**

ELECTRONIC COPY

LG644469701



July 16, 2024
IGI Report Number **LG644469701**
ROUND BRILLIANT
LABORATORY GROWN DIAMOND
5.58 - 5.61 X 3.40 MM
Carat Weight **0.65 CARAT**
Color Grade **D**
Clarity Grade **VS 1**
Cut Grade **IDEAL**
Polish **EXCELLENT**
Symmetry **EXCELLENT**
Fluorescence **NONE**
Inscription(s) **IGI LG644469701**

LABORATORY GROWN DIAMOND REPORT

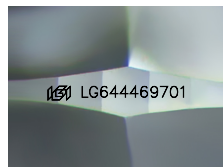
July 16, 2024
IGI Report Number **LG644469701**
Description **LABORATORY GROWN DIAMOND**
Shape and Cutting Style **ROUND BRILLIANT**
Measurements **5.58 - 5.61 X 3.40 MM**



HEARTS & ARROWS

GRADING RESULTS

Carat Weight **0.65 CARAT**
Color Grade **D**
Clarity Grade **VS 1**
Cut Grade **IDEAL**



Sample Image Used

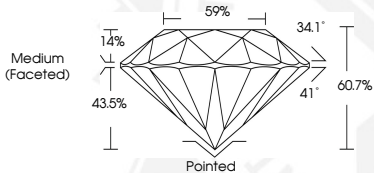
ADDITIONAL GRADING INFORMATION

Polish **EXCELLENT**
Symmetry **EXCELLENT**
Fluorescence **NONE**
Inscription(s) **IGI LG644469701**

Comments: **HEARTS & ARROWS**
This Laboratory Grown Diamond was created by Chemical Vapor Deposition (CVD) growth process.
Type Iia



July 16, 2024
IGI Report Number **LG644469701**
ROUND BRILLIANT
LABORATORY GROWN DIAMOND
5.58 - 5.61 X 3.40 MM
Carat Weight **0.65 CARAT**
Color Grade **D**
Clarity Grade **VS 1**
Cut Grade **IDEAL**
Polish **EXCELLENT**
Symmetry **EXCELLENT**
Fluorescence **NONE**
Inscription(s) **IGI LG644469701**
Comments: **HEARTS & ARROWS** This Laboratory Grown Diamond was created by Chemical Vapor Deposition (CVD) growth process.
Type Iia



THIS DOCUMENT WAS PRODUCED WITH THE FOLLOWING SECURITY MEASURES: SPECIAL DOCUMENT PAPER, PINK SCREENS, WATERMARK, BACKGROUND DESIGNS, HOLOGRAM AND OTHER SECURITY FEATURES NOT LISTED AND DO EXCEED DOCUMENT SECURITY INDUSTRY GUIDELINES.

For terms & conditions and to verify this report, please visit www.igi.org