

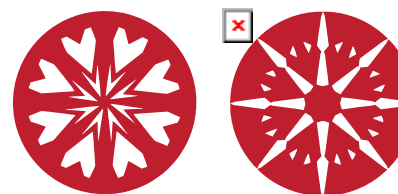


**INTERNATIONAL  
GEMOLOGICAL  
INSTITUTE**

LG644471349  
Report verification at [igi.org](http://igi.org)

**LIGHT PERFORMANCE REPORT**

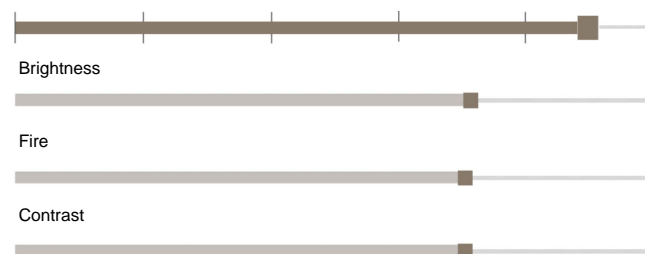
Light Performance Grade: **Exceptional**



Ideal-Scope representation

Low Moderate High Superior Exceptional

**Light Performance**



**COLOR**

D E F G H I J Faint Very Light Light

**CLARITY**

IF	VS <sup>1-2</sup>	VS <sup>1-2</sup>	SI <sup>1-2</sup>	I <sup>1-3</sup>
Internally Flawless	Very Very Slightly Included	Very Slightly Included	Slightly Included	Included

**ELECTRONIC COPY**

**LABORATORY GROWN DIAMOND REPORT**

July 19, 2024  
IGI Report Number **LG644471349**  
Description **LABORATORY GROWN DIAMOND**  
Shape and Cutting Style **ROUND BRILLIANT**  
Measurements **6.69 - 6.73 x 4.09 mm**

**GRADING RESULTS**

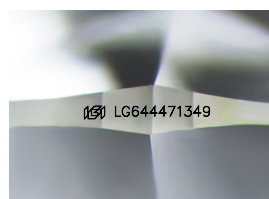
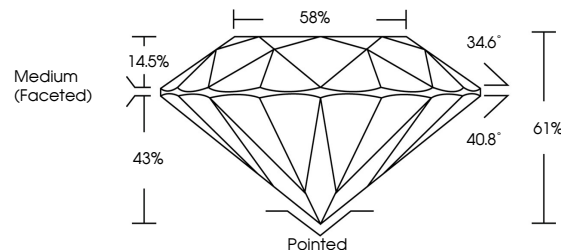
Carat Weight **1.12 CARAT**  
Color Grade **F**  
Clarity Grade **VVS 1**  
Cut Grade **IDEAL**

**ADDITIONAL GRADING INFORMATION**

Polish **EXCELLENT**  
Symmetry **EXCELLENT**  
Fluorescence **NONE**  
Inscription(s) **IGI LG644471349**

Comments: HEARTS & ARROWS  
This Laboratory Grown Diamond was created by Chemical Vapor Deposition (CVD) growth process. Type IIa

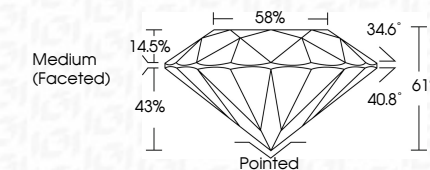
**PROPORTIONS**



Sample Image Used



July 19, 2024  
IGI Report Number **LG644471349**  
Description **LABORATORY GROWN DIAMOND**  
Shape and Cutting Style **ROUND BRILLIANT**  
Measurements **6.69 - 6.73 X 4.09 MM**  
**GRADING RESULTS**  
Carat Weight **1.12 CARAT**  
Color Grade **F**  
Clarity Grade **VVS 1**  
Cut Grade **IDEAL**



**ADDITIONAL GRADING INFORMATION**

Polish **EXCELLENT**  
Symmetry **EXCELLENT**  
Fluorescence **NONE**  
Inscription(s) **IGI LG644471349**  
Comments: HEARTS & ARROWS  
This Laboratory Grown Diamond was created by Chemical Vapor Deposition (CVD) growth process. Type IIa



**IGI**



July 19, 2024  
IGI Report No **LG644471349**  
**ROUND BRILLIANT**  
6.69 - 6.73 X 4.09 MM  
Carat Weight **1.12 CARAT**  
Color Grade **F**  
Clarity Grade **VVS 1**  
Cut Grade **IDEAL**  
Depth **61%**  
Table **58%**  
Girdle **Medium (Faceted)**  
Culet **Pointed**  
Polish **EXCELLENT**  
Symmetry **EXCELLENT**  
Fluorescence **NONE**  
Inscription(s) **IGI LG644471349**  
Comments: HEARTS & ARROWS  
This Laboratory Grown Diamond was created by Chemical Vapor Deposition (CVD) growth process. Type IIa