



**ELECTRONIC COPY**

LG644471420  
Report verification at igi.org



July 18, 2024

IGI Report Number **LG644471420**

Description **LABORATORY GROWN DIAMOND**

Shape and Cutting Style **CUT CORNERED  
RECTANGULAR MODIFIED  
BRILLIANT**

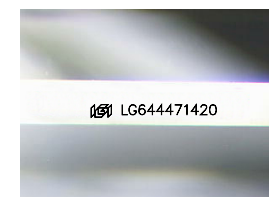
Measurements **9.40 X 6.73 X 4.53 MM**

**GRADING RESULTS**

Carat Weight **2.41 CARATS**

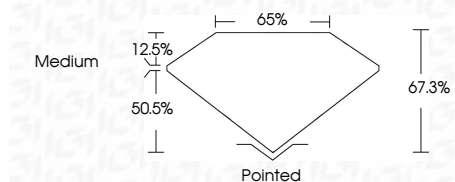
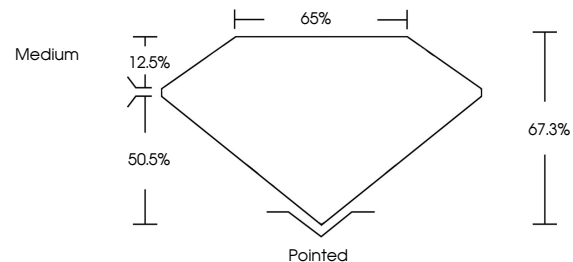
Color Grade **E**

Clarity Grade **VS 1**



Sample Image Used

**PROPORTIONS**



**ADDITIONAL GRADING INFORMATION**

Polish **EXCELLENT**

Symmetry **EXCELLENT**

Fluorescence **NONE**

Inscription(s) **IGI LG644471420**

Comments: This Laboratory Grown Diamond was created by Chemical Vapor Deposition (CVD) growth process. Type IIa



**IGI**

**COLOR**

D E F G H I J Faint Very Light Light

**CLARITY**

IF	VS <sup>1-2</sup>	VS <sup>1-2</sup>	SI <sup>1-2</sup>	I <sup>1-3</sup>
Internally Flawless	Very Very Slightly Included	Very Slightly Included	Slightly Included	Included



July 18, 2024  
IGI Report No LG644471420  
CUT CORNERED RECT. MODIFIED BRILLIANT  
9.40 X 6.73 X 4.53 MM  
2.41 CARATS  
E  
VS 1  
67.3%  
50.5%  
Medium  
Pointed  
EXCELLENT  
EXCELLENT  
NONE  
IGI LG644471420  
Comments: This Laboratory Grown Diamond was created by Chemical Vapor Deposition (CVD) growth process. Type IIa