



**ELECTRONIC COPY**

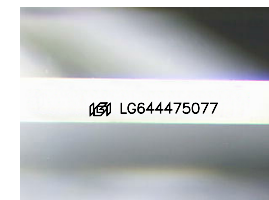
LG644475077  
Report verification at igi.org



July 18, 2024  
IGI Report Number **LG644475077**  
Description **LABORATORY GROWN DIAMOND**  
Shape and Cutting Style **EMERALD CUT**  
Measurements **9.33 X 6.71 X 4.54 MM**

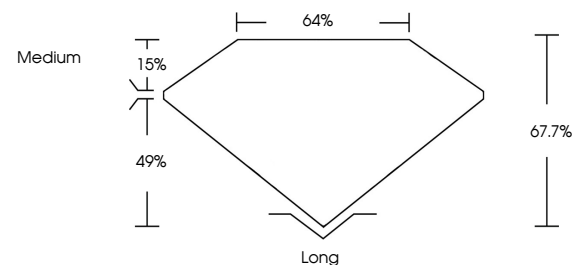
**GRADING RESULTS**

Carat Weight **2.85 CARATS**  
Color Grade **H**  
Clarity Grade **SI 1**

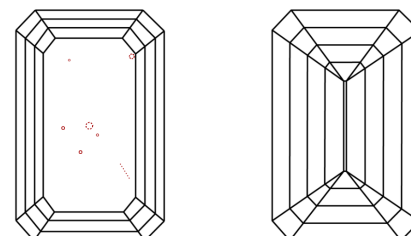


Sample Image Used

**PROPORTIONS**



**CLARITY CHARACTERISTICS**



**KEY TO SYMBOLS**

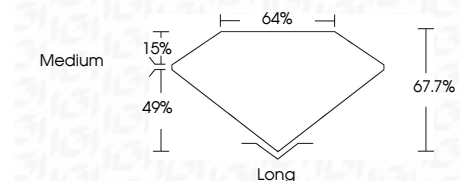
Red symbols indicate internal characteristics.  
Green symbols indicate external characteristics.

**COLOR**

D E F G H I J Faint Very Light Light

**CLARITY**

IF	VS <sup>1-2</sup>	VS <sup>1-2</sup>	SI <sup>1-2</sup>	I <sup>1-3</sup>
Internally Flawless	Very Very Slightly Included	Very Slightly Included	Slightly Included	Included



**ADDITIONAL GRADING INFORMATION**

Polish **EXCELLENT**  
Symmetry **EXCELLENT**  
Fluorescence **NONE**  
Inscription(s) **IGI LG644475077**  
Comments: This Laboratory Grown Diamond was created by Chemical Vapor Deposition (CVD) growth process.  
Type IIa



July 18, 2024  
IGI Report No. **LG644475077**  
**EMERALD CUT**  
9.33 X 6.71 X 4.54 MM  
Carat Weight **2.85 CARATS**  
Color Grade **H**  
Clarity Grade **SI 1**  
Depth **67.7%**  
Table **64%**  
Girdle **Medium**  
Culet **Long**  
Polish **EXCELLENT**  
Symmetry **EXCELLENT**  
Fluorescence **NONE**  
Inscription(s) **IGI LG644475077**  
Comments: This Laboratory Grown Diamond was created by Chemical Vapor Deposition (CVD) growth process.  
Type IIa