



**ELECTRONIC COPY**

LG644484825  
Report verification at igi.org



July 17, 2024

IGI Report Number **LG644484825**

Description **LABORATORY GROWN DIAMOND**

Shape and Cutting Style **PRINCESS CUT**

Measurements **7.99 X 7.94 X 5.74 MM**

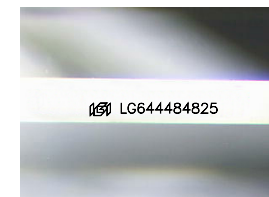
**GRADING RESULTS**

Carat Weight **3.28 CARATS**

Color Grade **D**

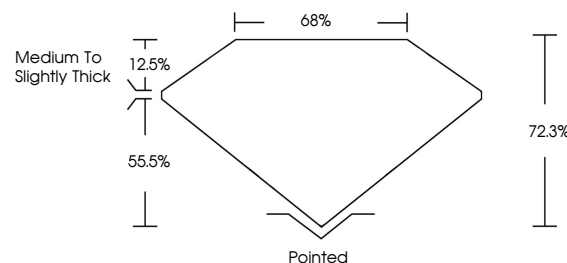
Clarity Grade **VS 1**

Cut Grade **EXCELLENT**

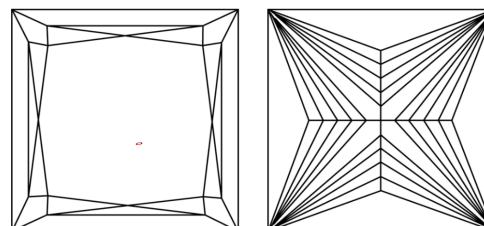


Sample Image Used

**PROPORTIONS**



**CLARITY CHARACTERISTICS**



**KEY TO SYMBOLS**

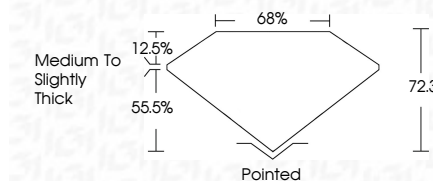
Red symbols indicate internal characteristics.  
Green symbols indicate external characteristics.

**COLOR**

D E F G H I J Faint Very Light Light

**CLARITY**

IF	VS <sup>1-2</sup>	VS <sup>1-2</sup>	SI <sup>1-2</sup>	I <sup>1-3</sup>
Internally Flawless	Very Very Slightly Included	Very Slightly Included	Slightly Included	Included



**ADDITIONAL GRADING INFORMATION**

Polish **EXCELLENT**

Symmetry **EXCELLENT**

Fluorescence **NONE**

Inscription(s) **IGI LG644484825**

Comments: This Laboratory Grown Diamond was created by Chemical Vapor Deposition (CVD) growth process. Type IIa



**IGI**



July 17, 2024  
IGI Report No. LG644484825  
PRINCESS CUT

3.28 CARATS  
D

7.99 X 7.94 X 5.74 MM  
EXCELLENT  
EXCELLENT  
68%  
Medium To Slightly Thick

Pointed  
EXCELLENT  
EXCELLENT  
NONE  
NONE  
IGI LG644484825

Cut  
Polish  
Symmetry  
Fluorescence  
Inscription(s)

Comments: This Laboratory Grown Diamond was created by Chemical Vapor Deposition (CVD) growth process. Type IIa