



ELECTRONIC COPY

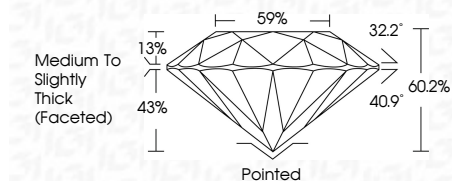
LG644488541
Report verification at igi.org



July 19, 2024
IGI Report Number **LG644488541**
Description **LABORATORY GROWN DIAMOND**
Shape and Cutting Style **ROUND BRILLIANT**
Measurements **8.09 - 8.15 X 4.89 MM**

GRADING RESULTS

Carat Weight **2.00 CARATS**
Color Grade **E**
Clarity Grade **VS 1**
Cut Grade **EXCELLENT**

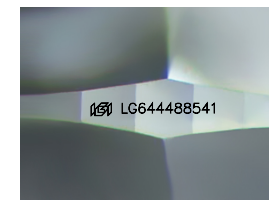


ADDITIONAL GRADING INFORMATION

Polish **EXCELLENT**
Symmetry **EXCELLENT**
Fluorescence **NONE**
Inscription(s) **IGI LG644488541**
Comments: This Laboratory Grown Diamond was created by Chemical Vapor Deposition (CVD) growth process. Type IIa

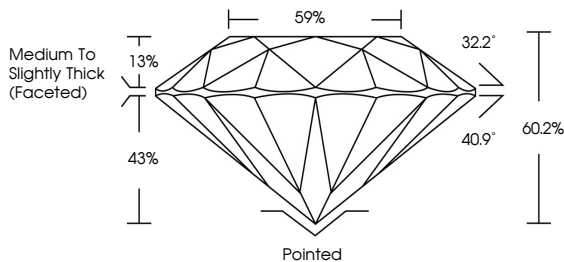


July 19, 2024
IGI Report No LG644488541
ROUND BRILLIANT
2.00 CARATS
E
Color Grade
VS 1
Clarity Grade
EXCELLENT
8.09 - 8.15 X 4.89 MM
4.89 MM
8.09 MM
8.15 MM
Depth
60.2%
59%
Table
Crown Height
13%
Pavilion Height
43%
Crown Angle
32.2°
Pavilion Angle
40.9°
Depth %
60.2%
Cut Grade
EXCELLENT
Symmetry
EXCELLENT
Polish
EXCELLENT
Fluorescence
NONE
Inscription(s)
IGI LG644488541
Comments: This Laboratory Grown Diamond was created by Chemical Vapor Deposition (CVD) growth process. Type IIa

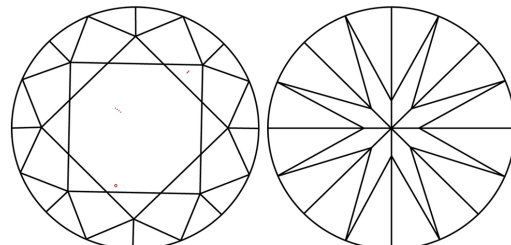


Sample Image Used

PROPORTIONS



CLARITY CHARACTERISTICS



KEY TO SYMBOLS

Red symbols indicate internal characteristics.
Green symbols indicate external characteristics.

COLOR

D E F G H I J Faint Very Light Light

CLARITY

IF	VS ¹⁻²	VS ¹⁻²	SI ¹⁻²	I ¹⁻³
Internally Flawless	Very Very Slightly Included	Very Slightly Included	Slightly Included	Included

