



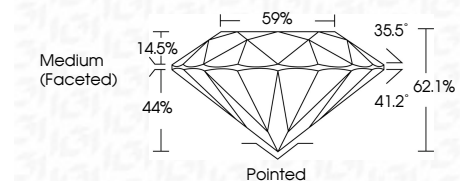
ELECTRONIC COPY

LG644488816
Report verification at igi.org



July 18, 2024
IGI Report Number LG644488816
Description LABORATORY GROWN DIAMOND
Shape and Cutting Style ROUND BRILLIANT
Measurements 8.05 - 8.10 X 5.01 MM

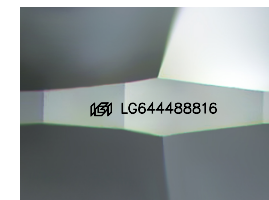
GRADING RESULTS
Carat Weight 2.02 CARATS
Color Grade E
Clarity Grade VS 1
Cut Grade IDEAL



ADDITIONAL GRADING INFORMATION
Polish EXCELLENT
Symmetry EXCELLENT
Fluorescence NONE
Inscription(s) LG644488816
Comments: This Laboratory Grown Diamond was created by Chemical Vapor Deposition (CVD) growth process. Type IIa

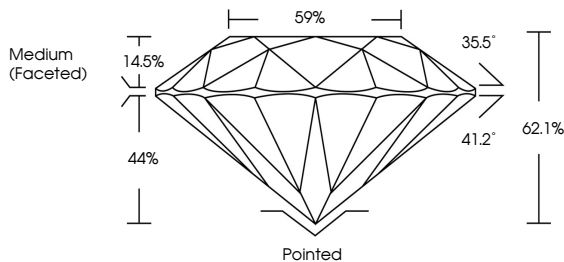


July 18, 2024
IGI Report No LG644488816
ROUND BRILLIANT
8.05 - 8.10 X 5.01 MM
2.02 CARATS
E
VS 1
IDEAL
62.1%
59%
Medium (Faceted)
Pointed
EXCELLENT
EXCELLENT
NONE
None
IGI LG644488816
Comments: This Laboratory Grown Diamond was created by Chemical Vapor Deposition (CVD) growth process. Type IIa

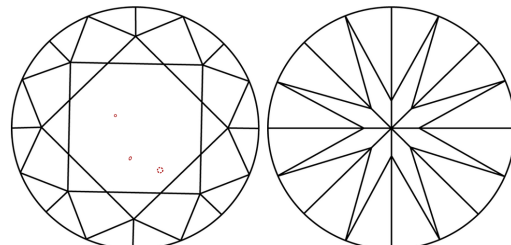


Sample Image Used

PROPORTIONS



CLARITY CHARACTERISTICS



KEY TO SYMBOLS
Red symbols indicate internal characteristics.
Green symbols indicate external characteristics.

Table with 5 columns: D, E, F, G, H, I, J, Faint, Very Light, Light

Table with 5 columns: IF, VS 1-2, VS 1-2, SI 1-2, I 1-3, Internally Flawless, Very Very Slightly Included, Very Slightly Included, Slightly Included, Included



July 18, 2024
IGI Report Number LG644488816
Description LABORATORY GROWN DIAMOND
Shape and Cutting Style ROUND BRILLIANT
Measurements 8.05 - 8.10 X 5.01 MM

GRADING RESULTS
Carat Weight 2.02 CARATS
Color Grade E
Clarity Grade VS 1
Cut Grade IDEAL

ADDITIONAL GRADING INFORMATION
Polish EXCELLENT
Symmetry EXCELLENT
Fluorescence NONE
Inscription(s) LG644488816

Comments: This Laboratory Grown Diamond was created by Chemical Vapor Deposition (CVD) growth process. Type IIa