



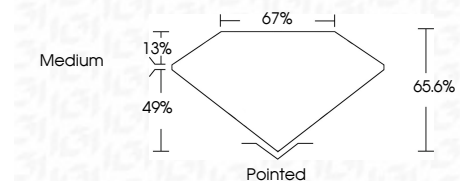
ELECTRONIC COPY

LG644489963 Report verification at igi.org



July 19, 2024 IGI Report Number LG644489963 Description LABORATORY GROWN DIAMOND Shape and Cutting Style SQUARE EMERALD CUT Measurements 6.84 X 6.72 X 4.41 MM

GRADING RESULTS Carat Weight 1.87 CARAT Color Grade E Clarity Grade VS 2

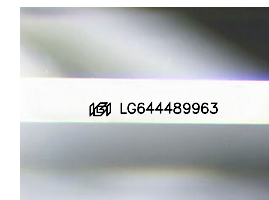


ADDITIONAL GRADING INFORMATION Polish EXCELLENT Symmetry EXCELLENT Fluorescence NONE Inscription(s) LG644489963 Comments: This Laboratory Grown Diamond was created by Chemical Vapor Deposition (CVD) growth process. Type IIa



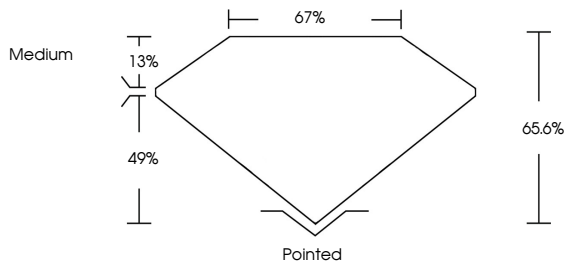
July 19, 2024 IGI Report No LG644489963 SQUARE EMERALD CUT 6.84 X 6.72 X 4.41 MM 1.87 CARAT E VS 2 65.6% 67% Medium Pointed EXCELLENT EXCELLENT NONE LG644489963

Comments: This Laboratory Grown Diamond was created by Chemical Vapor Deposition (CVD) growth process. Type IIa

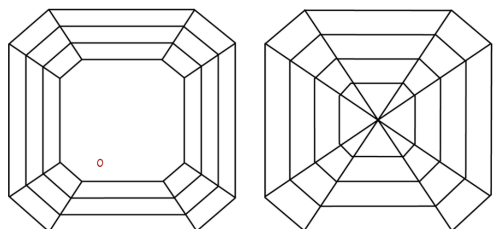


Sample Image Used

PROPORTIONS



CLARITY CHARACTERISTICS



KEY TO SYMBOLS Red symbols indicate internal characteristics. Green symbols indicate external characteristics.

COLOR

Color scale from D to J, with 'Faint' and 'Very Light' labels.

CLARITY

Clarity scale from IF to I 1-3, with 'Very Very Slightly Included' and 'Slightly Included' labels.



July 19, 2024 IGI Report Number LG644489963 Description LABORATORY GROWN DIAMOND Shape and Cutting Style SQUARE EMERALD CUT Measurements 6.84 X 6.72 X 4.41 MM

GRADING RESULTS Carat Weight 1.87 CARAT Color Grade E Clarity Grade VS 2

ADDITIONAL GRADING INFORMATION Polish EXCELLENT Symmetry EXCELLENT Fluorescence NONE Inscription(s) LG644489963

Comments: This Laboratory Grown Diamond was created by Chemical Vapor Deposition (CVD) growth process. Type IIa