



ELECTRONIC COPY

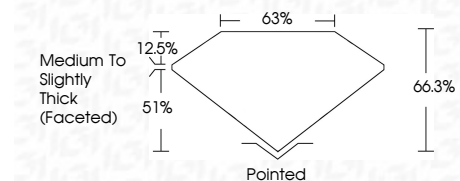
LG644490543
Report verification at igi.org



July 19, 2024
IGI Report Number LG644490543
Description LABORATORY GROWN DIAMOND
Shape and Cutting Style CUSHION BRILLIANT
Measurements 8.05 X 5.79 X 3.84 MM

GRADING RESULTS

Carat Weight 1.37 CARAT
Color Grade E
Clarity Grade VS 1

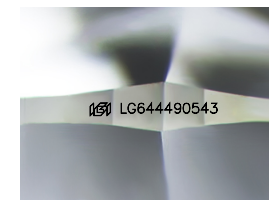


ADDITIONAL GRADING INFORMATION

Polish EXCELLENT
Symmetry EXCELLENT
Fluorescence NONE
Inscription(s) IGI LG644490543
Comments: This Laboratory Grown Diamond was created by Chemical Vapor Deposition (CVD) growth process. Type IIa

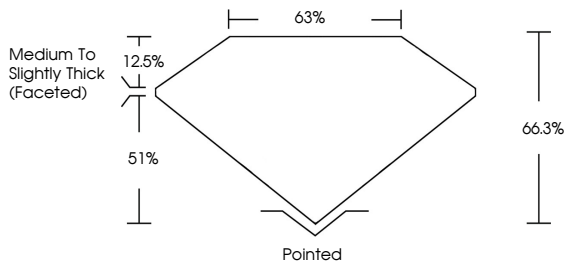


July 19, 2024
IGI Report No LG644490543
CUSHION BRILLIANT
8.05 X 5.79 X 3.84 MM
1.37 CARAT E
Color Grade VS 1
Depth 66.3%
Table 63%
Medium to Slightly Thick (Faceted)
Pointed CUSHION BRILLIANT EXCELLENT EXCELLENT NONE NONE
Inscription(s) IGI LG644490543
Comments: This Laboratory Grown Diamond was created by Chemical Vapor Deposition (CVD) growth process. Type IIa

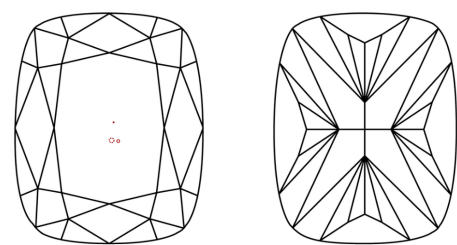


Sample Image Used

PROPORTIONS



CLARITY CHARACTERISTICS



KEY TO SYMBOLS

Red symbols indicate internal characteristics.
Green symbols indicate external characteristics.

COLOR

Table with color categories: D, E, F, G, H, I, J, Faint, Very Light, Light

CLARITY

Table with clarity categories: IF, VVS 1-2, VS 1-2, SI 1-2, I 1-3, Internally Flawless, Very Very Slightly Included, Very Slightly Included, Slightly Included, Included

