



ELECTRONIC COPY

LABORATORY GROWN DIAMOND REPORT

July 20, 2024
IGI Report Number LG644491460
Description LABORATORY GROWN DIAMOND
Shape and Cutting Style CUT CORNERED RECTANGULAR MODIFIED BRILLIANT
Measurements 8.70 X 6.09 X 3.97 MM

GRADING RESULTS

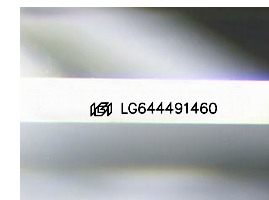
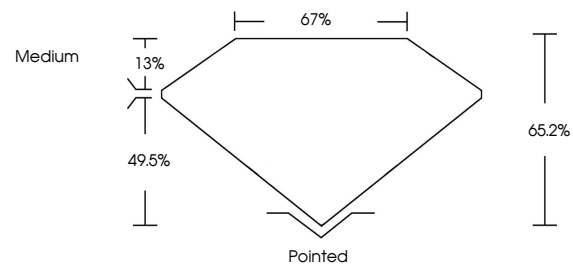
Carat Weight 1.82 CARAT
Color Grade D
Clarity Grade VS 2

ADDITIONAL GRADING INFORMATION

Polish EXCELLENT
Symmetry EXCELLENT
Fluorescence NONE
Inscription(s) LG644491460

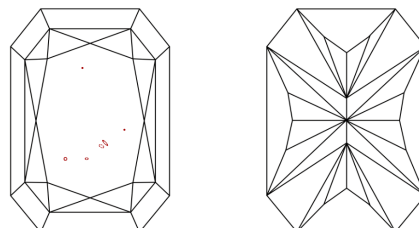
Comments: This Laboratory Grown Diamond was created by Chemical Vapor Deposition (CVD) growth process.
Type IIa

PROPORTIONS



Sample Image Used

CLARITY CHARACTERISTICS



KEY TO SYMBOLS

Red symbols indicate internal characteristics.
Green symbols indicate external characteristics.

COLOR

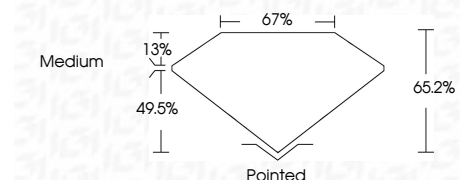
D E F G H I J Faint Very Light Light

CLARITY

IF	VS ¹⁻²	VS ¹⁻²	SI ¹⁻²	I ¹⁻³
Internally Flawless	Very Very Slightly Included	Very Slightly Included	Slightly Included	Included



July 20, 2024
IGI Report Number LG644491460
Description LABORATORY GROWN DIAMOND
Shape and Cutting Style CUT CORNERED RECTANGULAR MODIFIED BRILLIANT
Measurements 8.70 X 6.09 X 3.97 MM
GRADING RESULTS
Carat Weight 1.82 CARAT
Color Grade D
Clarity Grade VS 2



ADDITIONAL GRADING INFORMATION

Polish EXCELLENT
Symmetry EXCELLENT
Fluorescence NONE
Inscription(s) LG644491460
Comments: This Laboratory Grown Diamond was created by Chemical Vapor Deposition (CVD) growth process.
Type IIa



IGI



July 20, 2024
IGI Report No LG644491460
CUT CORNERED RECT. MODIFIED BRILLIANT
8.70 X 6.09 X 3.97 MM
Carat Weight 1.82 CARAT
Color Grade D
Clarity Grade VS 2
Depth 49.5%
Table 67%
Girdle Medium
Culet Pointed
Polish EXCELLENT
Symmetry EXCELLENT
Fluorescence NONE
Inscription(s) LG644491460

Comments: This Laboratory Grown Diamond was created by Chemical Vapor Deposition (CVD) growth process.
Type IIa