



**ELECTRONIC COPY**

LG644493471  
Report verification at igi.org



July 22, 2024

IGI Report Number **LG644493471**

Description **LABORATORY GROWN DIAMOND**

Shape and Cutting Style **ROUND BRILLIANT**

Measurements **6.38 - 6.45 X 3.94 MM**

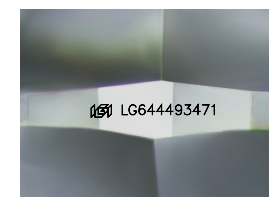
**GRADING RESULTS**

Carat Weight **1.00 CARAT**

Color Grade **F**

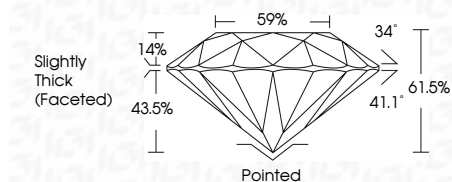
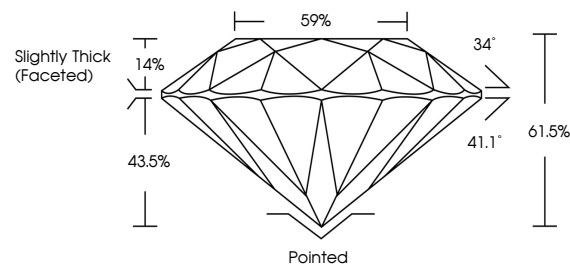
Clarity Grade **VS 1**

Cut Grade **IDEAL**



Sample Image Used

**PROPORTIONS**



**ADDITIONAL GRADING INFORMATION**

Polish **EXCELLENT**

Symmetry **EXCELLENT**

Fluorescence **NONE**

Inscription(s) **IGI LG644493471**

Comments: This Laboratory Grown Diamond was created by Chemical Vapor Deposition (CVD) growth process. Type IIa



**COLOR**

D E F G H I J Faint Very Light Light

**CLARITY**

IF	VS <sup>1-2</sup>	VS <sup>1-2</sup>	SI <sup>1-2</sup>	I <sup>1-3</sup>
Internally Flawless	Very Very Slightly Included	Very Slightly Included	Slightly Included	Included



July 22, 2024  
IGI Report No LG644493471  
ROUND BRILLIANT  
6.38 - 6.45 X 3.94 MM  
Carat Weight 1.00 CARAT  
Color Grade F  
Clarity Grade VS 1  
Cut Grade IDEAL  
Depth 61.5%  
Table 59%  
Girdle Slightly Thick (Faceted)  
Culet Pointed  
Polish EXCELLENT  
Symmetry EXCELLENT  
Fluorescence NONE  
Inscriptions(s) IGI LG644493471  
Comments: This Laboratory Grown Diamond was created by Chemical Vapor Deposition (CVD) growth process. Type IIa