



**ELECTRONIC COPY**

LG644494513  
Report verification at igi.org



July 19, 2024

IGI Report Number **LG644494513**

Description **LABORATORY GROWN DIAMOND**

Shape and Cutting Style **EMERALD CUT**

Measurements **7.42 X 5.31 X 3.56 MM**

**GRADING RESULTS**

Carat Weight **1.37 CARAT**

Color Grade **E**

Clarity Grade **VVS 2**

July 19, 2024  
IGI Report Number **LG644494513**  
Description **LABORATORY GROWN DIAMOND**  
Shape and Cutting Style **EMERALD CUT**  
Measurements **7.42 X 5.31 X 3.56 MM**

**GRADING RESULTS**

Carat Weight **1.37 CARAT**

Color Grade **E**

Clarity Grade **VVS 2**

**ADDITIONAL GRADING INFORMATION**

Polish **EXCELLENT**

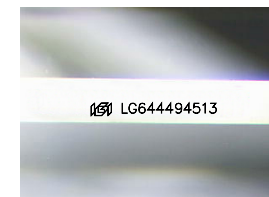
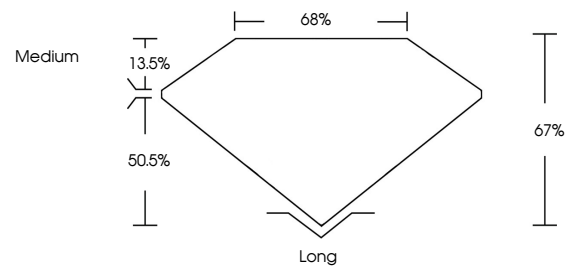
Symmetry **EXCELLENT**

Fluorescence **NONE**

Inscription(s) **IGI LG644494513**

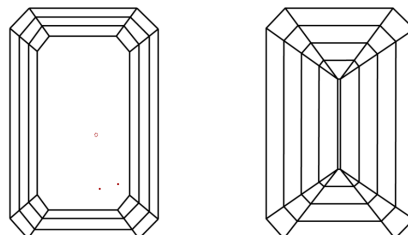
Comments: This Laboratory Grown Diamond was created by Chemical Vapor Deposition (CVD) growth process.  
Type IIa

**PROPORTIONS**



Sample Image Used

**CLARITY CHARACTERISTICS**



**KEY TO SYMBOLS**

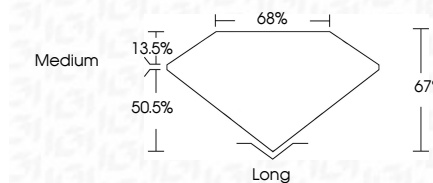
Red symbols indicate internal characteristics.  
Green symbols indicate external characteristics.

**COLOR**

D E F G H I J Faint Very Light Light

**CLARITY**

IF	VS <sup>1-2</sup>	VS <sup>1-2</sup>	SI <sup>1-2</sup>	I <sup>1-3</sup>
Internally Flawless	Very Very Slightly Included	Very Slightly Included	Slightly Included	Included



**ADDITIONAL GRADING INFORMATION**

Polish **EXCELLENT**

Symmetry **EXCELLENT**

Fluorescence **NONE**

Inscription(s) **IGI LG644494513**

Comments: This Laboratory Grown Diamond was created by Chemical Vapor Deposition (CVD) growth process.  
Type IIa



**IGI**



July 19, 2024  
IGI Report No **LG644494513**  
**EMERALD CUT**  
7.42 X 5.31 X 3.56 MM  
1.37 CARAT  
E  
VVS 2  
67%  
65%  
Medium  
Long  
EXCELLENT  
EXCELLENT  
NONE  
IGI LG644494513  
Comments: This Laboratory Grown Diamond was created by Chemical Vapor Deposition (CVD) growth process.  
Type IIa