



ELECTRONIC COPY

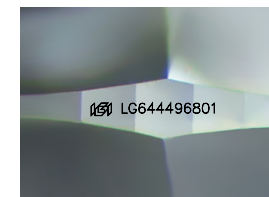
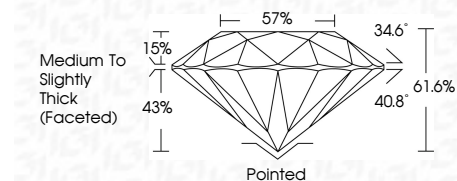
LG644496801
Report verification at igi.org



August 1, 2024
IGI Report Number LG644496801
Description LABORATORY GROWN DIAMOND
Shape and Cutting Style ROUND BRILLIANT
Measurements 8.21 - 8.25 X 5.07 MM

GRADING RESULTS

Carat Weight 2.10 CARATS
Color Grade E
Clarity Grade SI 1
Cut Grade IDEAL



Sample Image Used

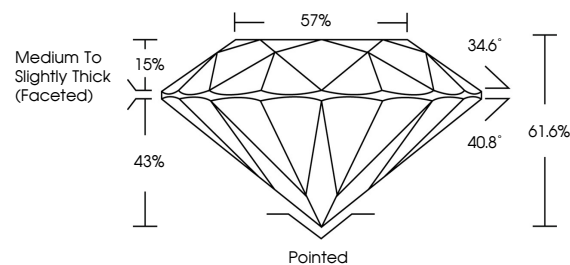
ADDITIONAL GRADING INFORMATION

Polish EXCELLENT
Symmetry EXCELLENT
Fluorescence NONE
Inscription(s) LG644496801
Comments: This Laboratory Grown Diamond was created by Chemical Vapor Deposition (CVD) growth process. Type IIa

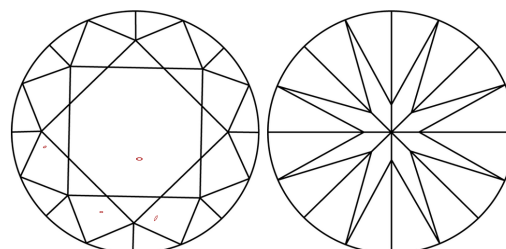


August 1, 2024
IGI Report No LG644496801
ROUND BRILLIANT
8.21 - 8.25 X 5.07 MM
2.10 CARATS E
SI 1 IDEAL
61.6% 57%
Medium To Slightly Thick (Faceted)
Pointed EXCELLENT EXCELLENT NONE
None LG644496801
Comments: This Laboratory Grown Diamond was created by Chemical Vapor Deposition (CVD) growth process. Type IIa

PROPORTIONS



CLARITY CHARACTERISTICS



KEY TO SYMBOLS

Red symbols indicate internal characteristics.
Green symbols indicate external characteristics.

COLOR

D E F G H I J Faint Very Light Light

CLARITY

IF VS 1-2 VS 1-2 SI 1-2 I 1-3
Internally Flawless Very Very Slightly Included Very Slightly Included Slightly Included Included

