



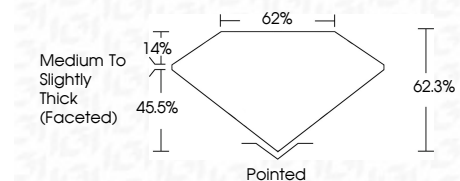
ELECTRONIC COPY

LG644499063
Report verification at igi.org



July 31, 2024
IGI Report Number LG644499063
Description LABORATORY GROWN DIAMOND
Shape and Cutting Style PEAR BRILLIANT
Measurements 12.49 X 7.95 X 4.95 MM

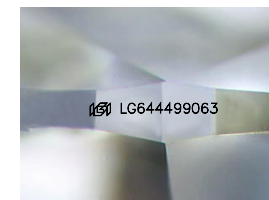
GRADING RESULTS
Carat Weight 2.82 CARATS
Color Grade E
Clarity Grade VS 2



ADDITIONAL GRADING INFORMATION
Polish EXCELLENT
Symmetry EXCELLENT
Fluorescence NONE
Inscription(s) LG644499063
Comments: This Laboratory Grown Diamond was created by Chemical Vapor Deposition (CVD) growth process. Type IIa

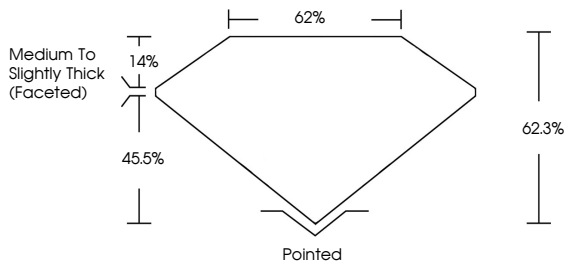


July 31, 2024
IGI Report No LG644499063
PEAR BRILLIANT
12.49 X 7.95 X 4.95 MM
2.82 CARATS
E
VS 2
62.3%
62%
Medium to Slightly Thick (Faceted)
Pointed
EXCELLENT
EXCELLENT
NONE
None
Inscription(s) LG644499063
Comments: This Laboratory Grown Diamond was created by Chemical Vapor Deposition (CVD) growth process. Type IIa

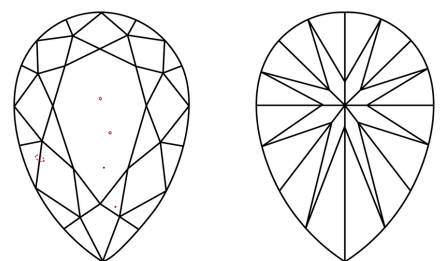


Sample Image Used

PROPORTIONS



CLARITY CHARACTERISTICS



KEY TO SYMBOLS
Red symbols indicate internal characteristics.
Green symbols indicate external characteristics.

COLOR

Table with color categories: D, E, F, G, H, I, J, Faint, Very Light, Light

CLARITY

Table with clarity categories: IF, VS 1-2, VS 1-2, SI 1-2, I 1-3, Internally Flawless, Very Very Slightly Included, Very Slightly Included, Slightly Included, Included



July 31, 2024
IGI Report Number LG644499063
Description LABORATORY GROWN DIAMOND
Shape and Cutting Style PEAR BRILLIANT
Measurements 12.49 X 7.95 X 4.95 MM

GRADING RESULTS
Carat Weight 2.82 CARATS
Color Grade E
Clarity Grade VS 2

ADDITIONAL GRADING INFORMATION
Polish EXCELLENT
Symmetry EXCELLENT
Fluorescence NONE
Inscription(s) LG644499063

Comments: This Laboratory Grown Diamond was created by Chemical Vapor Deposition (CVD) growth process. Type IIa