



ELECTRONIC COPY

LG644499931
Report verification at igi.org



July 31, 2024
IGI Report Number LG644499931
Description LABORATORY GROWN DIAMOND
Shape and Cutting Style SQUARE CUSHION MODIFIED BRILLIANT
Measurements 6.49 X 6.45 X 4.27 MM
GRADING RESULTS
Carat Weight 1.58 CARAT
Color Grade FANCY YELLOW
Clarity Grade VVS 1

LABORATORY GROWN DIAMOND REPORT

July 31, 2024
IGI Report Number LG644499931
Description LABORATORY GROWN DIAMOND
Shape and Cutting Style SQUARE CUSHION MODIFIED BRILLIANT
Measurements 6.49 X 6.45 X 4.27 MM

GRADING RESULTS

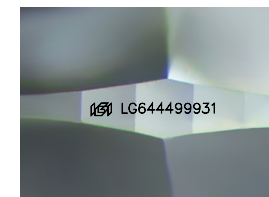
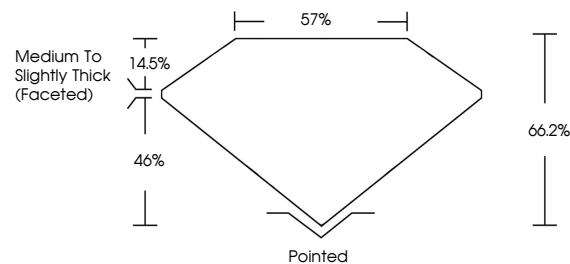
Carat Weight 1.58 CARAT
Color Grade FANCY YELLOW
Clarity Grade VVS 1

ADDITIONAL GRADING INFORMATION

Polish EXCELLENT
Symmetry EXCELLENT
Fluorescence NONE
Inscription(s) IGI LG644499931

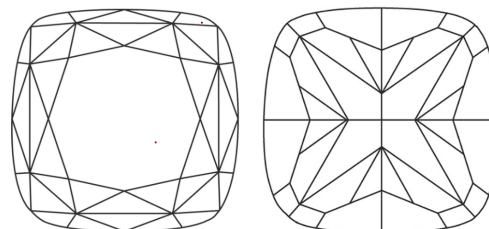
Comments: This Laboratory Grown Diamond was created by Chemical Vapor Deposition (CVD) growth process.

PROPORTIONS



Sample Image Used

CLARITY CHARACTERISTICS



KEY TO SYMBOLS

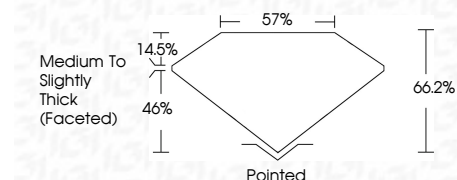
Red symbols indicate internal characteristics.
Green symbols indicate external characteristics.

COLOR

D E F G H I J Faint Very Light Light

CLARITY

Table with columns for clarity grades: IF, VS 1-2, VS 1-2, SI 1-2, I 1-3 and their corresponding descriptions: Internally Flawless, Very Very Slightly Included, Very Slightly Included, Slightly Included, Included.



ADDITIONAL GRADING INFORMATION

Polish EXCELLENT
Symmetry EXCELLENT
Fluorescence NONE
Inscription(s) IGI LG644499931
Comments: This Laboratory Grown Diamond was created by Chemical Vapor Deposition (CVD) growth process.



July 31, 2024
IGI Report No LG644499931
SQUARE CUSHION MODIFIED BRILLIANT
6.49 X 6.45 X 4.27 MM
1.58 CARAT
FANCY YELLOW
VVS 1
66.2%
57%
Medium to Slightly Thick (Faceted)
Pointed
EXCELLENT
EXCELLENT
NONE
IGI LG644499931
Comments: This Laboratory Grown Diamond was created by Chemical Vapor Deposition (CVD) growth process.