



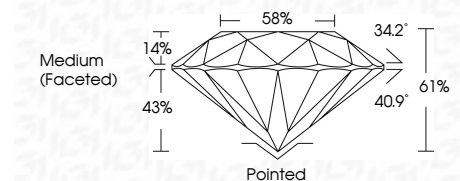
ELECTRONIC COPY

LG645401308 Report verification at igi.org



July 29, 2024 IGI Report Number LG645401308 Description LABORATORY GROWN DIAMOND Shape and Cutting Style ROUND BRILLIANT Measurements 7.71 - 7.73 X 4.71 MM

GRADING RESULTS Carat Weight 1.72 CARAT Color Grade F Clarity Grade VS 2 Cut Grade IDEAL



ADDITIONAL GRADING INFORMATION Polish EXCELLENT Symmetry EXCELLENT Fluorescence NONE Inscription(s) IGI LG645401308 Comments: This Laboratory Grown Diamond was created by Chemical Vapor Deposition (CVD) growth process. Type IIa



July 29, 2024 IGI Report No LG645401308 ROUND BRILLIANT 7.71 - 7.73 X 4.71 MM 1.72 CARAT F VS 2 IDEAL 61% 58% Medium (Faceted) Pointed EXCELLENT EXCELLENT NONE NONE IGI LG645401308 Comments: This Laboratory Grown Diamond was created by Chemical Vapor Deposition (CVD) growth process. Type IIa

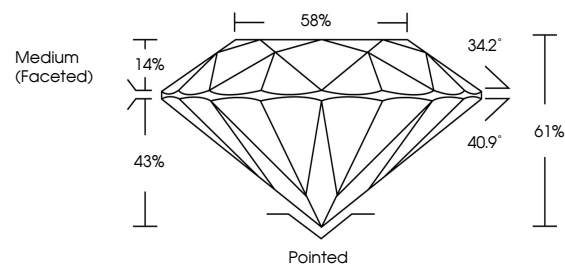
July 29, 2024 IGI Report Number LG645401308 Description LABORATORY GROWN DIAMOND Shape and Cutting Style ROUND BRILLIANT Measurements 7.71 - 7.73 X 4.71 MM

GRADING RESULTS Carat Weight 1.72 CARAT Color Grade F Clarity Grade VS 2 Cut Grade IDEAL

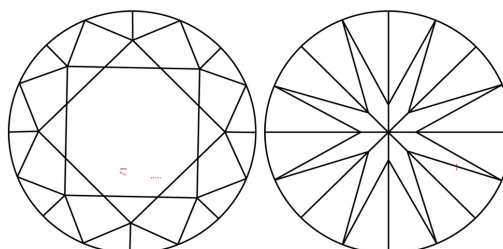
ADDITIONAL GRADING INFORMATION Polish EXCELLENT Symmetry EXCELLENT Fluorescence NONE Inscription(s) IGI LG645401308

Comments: This Laboratory Grown Diamond was created by Chemical Vapor Deposition (CVD) growth process. Type IIa

PROPORTIONS



CLARITY CHARACTERISTICS



KEY TO SYMBOLS

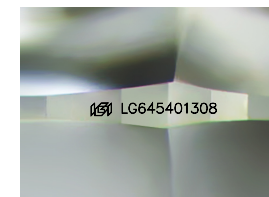
Red symbols indicate internal characteristics. Green symbols indicate external characteristics.

COLOR

D E F G H I J Faint Very Light Light

CLARITY

IF VS 1-2 VS 1-2 SI 1-2 I 1-3 Internally Flawless Very Very Slightly Included Very Slightly Included Slightly Included Included



Sample Image Used

