



ELECTRONIC COPY

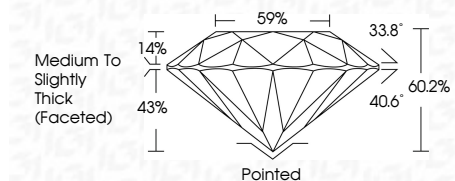
LG645401429 Report verification at igi.org



July 30, 2024 IGI Report Number LG645401429 Description LABORATORY GROWN DIAMOND Shape and Cutting Style ROUND BRILLIANT Measurements 8.17 - 8.19 X 4.93 MM

GRADING RESULTS

Carat Weight 2.03 CARATS Color Grade E Clarity Grade VS 2 Cut Grade IDEAL

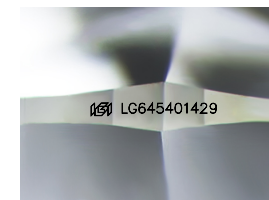


ADDITIONAL GRADING INFORMATION

Polish EXCELLENT Symmetry EXCELLENT Fluorescence NONE Inscription(s) IGI LG645401429 Comments: This Laboratory Grown Diamond was created by Chemical Vapor Deposition (CVD) growth process. Type IIa

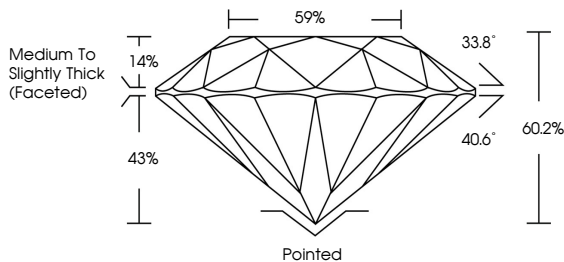


July 30, 2024 IGI Report No LG645401429 ROUND BRILLIANT 8.17 - 8.19 X 4.93 MM 2.03 CARATS E VS 2 IDEAL 60.2% 59% Medium To Slightly Thick (Faceted) Pointed EXCELLENT EXCELLENT NONE IGI LG645401429 Comments: This Laboratory Grown Diamond was created by Chemical Vapor Deposition (CVD) growth process. Type IIa

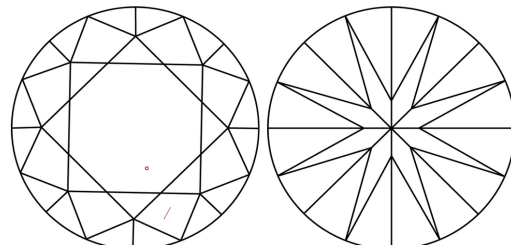


Sample Image Used

PROPORTIONS



CLARITY CHARACTERISTICS



KEY TO SYMBOLS

Red symbols indicate internal characteristics. Green symbols indicate external characteristics.

COLOR

D E F G H I J Faint Very Light Light

CLARITY

IF VS 1-2 VS 1-2 SI 1-2 I 1-3 Internally Flawless Very Very Slightly Included Very Slightly Included Slightly Included Included

