



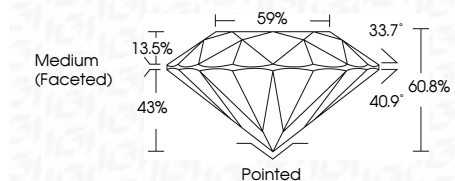
ELECTRONIC COPY

LG645401687
Report verification at igi.org



July 29, 2024
IGI Report Number LG645401687
Description LABORATORY GROWN DIAMOND
Shape and Cutting Style ROUND BRILLIANT
Measurements 6.60 - 6.60 X 4.01 MM

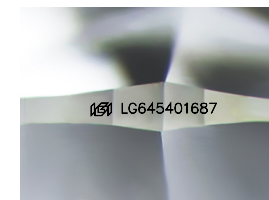
GRADING RESULTS
Carat Weight 1.07 CARAT
Color Grade G
Clarity Grade VS 1
Cut Grade IDEAL



ADDITIONAL GRADING INFORMATION
Polish EXCELLENT
Symmetry EXCELLENT
Fluorescence NONE
Inscription(s) IGI LG645401687
Comments: This Laboratory Grown Diamond was created by Chemical Vapor Deposition (CVD) growth process. Type IIa

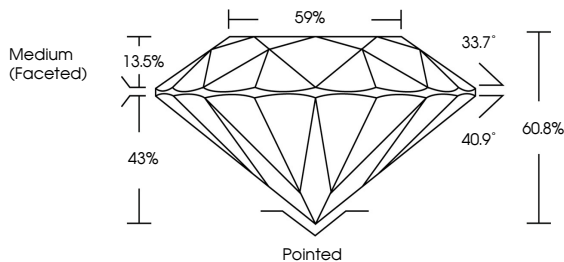


July 29, 2024
IGI Report No LG645401687
ROUND BRILLIANT
6.60 - 6.60 X 4.01 MM
1.07 CARAT
Color Grade G
Clarity Grade VS 1
Depth 60.8%
Table 59%
Medium (Faceted)
Cutler Pointed
Polish EXCELLENT
Symmetry EXCELLENT
Fluorescence NONE
Inscription(s) IGI LG645401687
Comments: This Laboratory Grown Diamond was created by Chemical Vapor Deposition (CVD) growth process. Type IIa

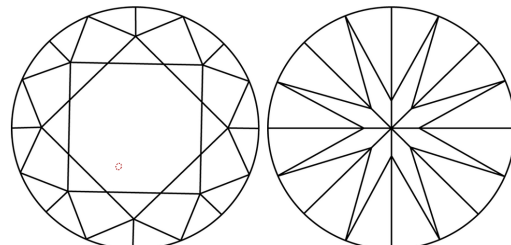


Sample Image Used

PROPORTIONS



CLARITY CHARACTERISTICS



KEY TO SYMBOLS
Red symbols indicate internal characteristics.
Green symbols indicate external characteristics.

Table with 10 columns: D, E, F, G, H, I, J, Faint, Very Light, Light

Table with 5 columns: IF, VS 1-2, VS 1-2, SI 1-2, I 1-3
Internally Flawless, Very Very Slightly Included, Very Slightly Included, Slightly Included, Included



THIS DOCUMENT WAS PRODUCED WITH THE FOLLOWING SECURITY MEASURES: SPECIAL DOCUMENT PAPER, INK SCREENS, WATERMARK BACKGROUND DESIGNS, HOLOGRAM AND OTHER SECURITY FEATURES NOT LISTED AND DO EXCEED DOCUMENT SECURITY INDUSTRY GUIDELINES.

July 29, 2024
IGI Report Number LG645401687
Description LABORATORY GROWN DIAMOND
Shape and Cutting Style ROUND BRILLIANT
Measurements 6.60 - 6.60 X 4.01 MM

GRADING RESULTS
Carat Weight 1.07 CARAT
Color Grade G
Clarity Grade VS 1
Cut Grade IDEAL

ADDITIONAL GRADING INFORMATION
Polish EXCELLENT
Symmetry EXCELLENT
Fluorescence NONE
Inscription(s) IGI LG645401687

Comments: This Laboratory Grown Diamond was created by Chemical Vapor Deposition (CVD) growth process. Type IIa