



ELECTRONIC COPY

LG645401738
Report verification at igi.org



July 30, 2024
IGI Report Number LG645401738
Description LABORATORY GROWN DIAMOND
Shape and Cutting Style ROUND BRILLIANT
Measurements 7.97 - 8.03 X 4.90 MM
GRADING RESULTS
Carat Weight 1.93 CARAT
Color Grade E
Clarity Grade VS 2
Cut Grade IDEAL

July 30, 2024
IGI Report Number LG645401738
Description LABORATORY GROWN DIAMOND
Shape and Cutting Style ROUND BRILLIANT
Measurements 7.97 - 8.03 X 4.90 MM

GRADING RESULTS

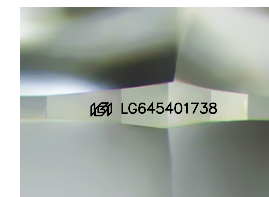
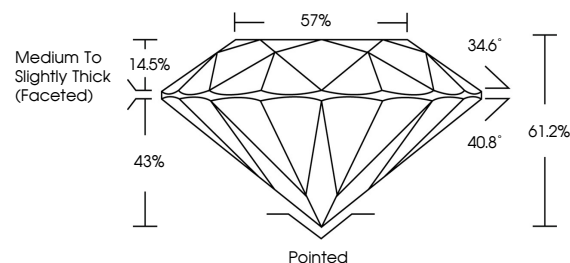
Carat Weight 1.93 CARAT
Color Grade E
Clarity Grade VS 2
Cut Grade IDEAL

ADDITIONAL GRADING INFORMATION

Polish EXCELLENT
Symmetry EXCELLENT
Fluorescence NONE
Inscription(s) IGI LG645401738

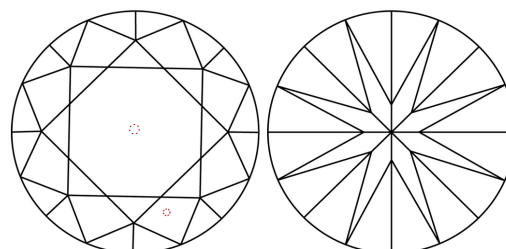
Comments: This Laboratory Grown Diamond was created by Chemical Vapor Deposition (CVD) growth process. Type IIa

PROPORTIONS



Sample Image Used

CLARITY CHARACTERISTICS



KEY TO SYMBOLS

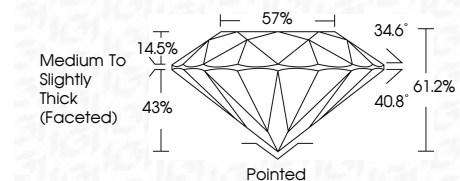
Red symbols indicate internal characteristics.
Green symbols indicate external characteristics.

COLOR

D E F G H I J Faint Very Light Light

CLARITY

IF VS 1-2 VS 1-2 SI 1-2 I 1-3
Internally Flawless Very Very Slightly Included Very Slightly Included Slightly Included Included



ADDITIONAL GRADING INFORMATION

Polish EXCELLENT
Symmetry EXCELLENT
Fluorescence NONE
Inscription(s) IGI LG645401738
Comments: This Laboratory Grown Diamond was created by Chemical Vapor Deposition (CVD) growth process. Type IIa



Summary of report details including date, report number, description, measurements, grading results, and additional information.