



**INTERNATIONAL
GEMOLOGICAL
INSTITUTE**

ELECTRONIC COPY

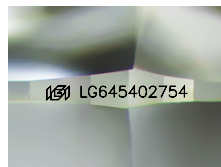
LG645402754



August 1, 2024
IGI Report Number LG645402754
ROUND BRILLIANT
LABORATORY GROWN DIAMOND
4.78 - 4.81 X 3.02 MM
 Carat Weight **0.43 CARAT**
 Color Grade **E**
 Clarity Grade **VVS 1**
 Cut Grade **EXCELLENT**
 Polish **EXCELLENT**
 Symmetry **EXCELLENT**
 Fluorescence **NONE**
 Inscription(s) **IGI LG645402754**

LABORATORY GROWN DIAMOND REPORT

August 1, 2024
 IGI Report Number **LG645402754**
 Description **LABORATORY GROWN DIAMOND**
 Shape and Cutting Style **ROUND BRILLIANT**
 Measurements **4.78 - 4.81 X 3.02 MM**



Sample Image Used

GRADING RESULTS

Carat Weight **0.43 CARAT**
 Color Grade **E**
 Clarity Grade **VVS 1**
 Cut Grade **EXCELLENT**

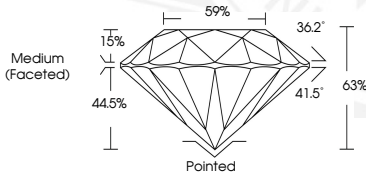
ADDITIONAL GRADING INFORMATION

Polish **EXCELLENT**
 Symmetry **EXCELLENT**
 Fluorescence **NONE**
 Inscription(s) **IGI LG645402754**

Comments: This Laboratory Grown Diamond was created by Chemical Vapor Deposition (CVD) growth process. Type IIa



August 1, 2024
IGI Report Number LG645402754
ROUND BRILLIANT
LABORATORY GROWN DIAMOND
4.78 - 4.81 X 3.02 MM
 Carat Weight **0.43 CARAT**
 Color Grade **E**
 Clarity Grade **VVS 1**
 Cut Grade **EXCELLENT**
 Polish **EXCELLENT**
 Symmetry **EXCELLENT**
 Fluorescence **NONE**
 Inscription(s) **IGI LG645402754**



THIS DOCUMENT WAS PRODUCED WITH THE FOLLOWING SECURITY MEASURES: SPECIAL DOCUMENT PAPER, INK SCREENS, WATERMARK, BACKGROUND DESIGN, HOLOGRAM AND OTHER SECURITY FEATURES NOT LISTED AND DO EXCEED DOCUMENT SECURITY INDUSTRY GUIDELINES.

For terms & conditions and to verify this report, please visit www.igi.org