



ELECTRONIC COPY

LABORATORY GROWN DIAMOND REPORT

July 30, 2024
IGI Report Number LG645403895
Description LABORATORY GROWN DIAMOND
Shape and Cutting Style CUT CORNERED RECTANGULAR MODIFIED BRILLIANT
Measurements 9.84 X 6.98 X 4.63 MM

GRADING RESULTS

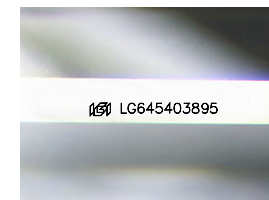
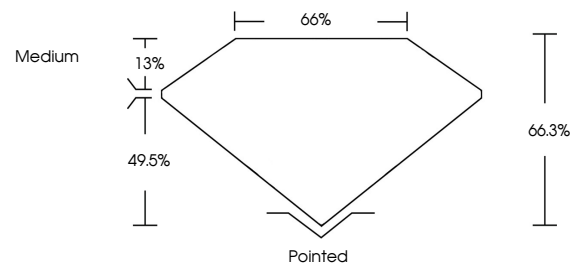
Carat Weight 2.83 CARATS
Color Grade F
Clarity Grade VS 1

ADDITIONAL GRADING INFORMATION

Polish EXCELLENT
Symmetry EXCELLENT
Fluorescence NONE
Inscription(s) LG645403895

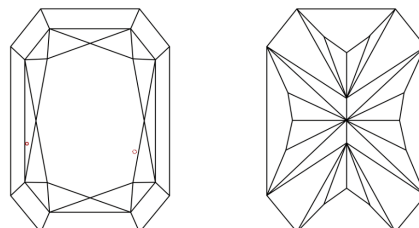
Comments: This Laboratory Grown Diamond was created by Chemical Vapor Deposition (CVD) growth process.
Type IIa

PROPORTIONS



Sample Image Used

CLARITY CHARACTERISTICS



KEY TO SYMBOLS

Red symbols indicate internal characteristics.
Green symbols indicate external characteristics.

COLOR

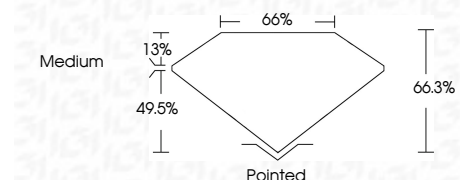
D E F G H I J Faint Very Light Light

CLARITY

IF	VS ¹⁻²	VS ¹⁻²	SI ¹⁻²	I ¹⁻³
Internally Flawless	Very Very Slightly Included	Very Slightly Included	Slightly Included	Included



July 30, 2024
IGI Report Number LG645403895
Description LABORATORY GROWN DIAMOND
Shape and Cutting Style CUT CORNERED RECTANGULAR MODIFIED BRILLIANT
Measurements 9.84 X 6.98 X 4.63 MM
GRADING RESULTS
Carat Weight 2.83 CARATS
Color Grade F
Clarity Grade VS 1



ADDITIONAL GRADING INFORMATION

Polish EXCELLENT
Symmetry EXCELLENT
Fluorescence NONE
Inscription(s) LG645403895
Comments: This Laboratory Grown Diamond was created by Chemical Vapor Deposition (CVD) growth process.
Type IIa



IGI



July 30, 2024
IGI Report No LG645403895
CUT CORNERED RECT. MODIFIED BRILLIANT
9.84 X 6.98 X 4.63 MM
2.83 CARATS
F
VS 1
66.3%
66.3%
Medium
Pointed
EXCELLENT
EXCELLENT
NONE
NONE
 LG645403895

Comments: This Laboratory Grown Diamond was created by Chemical Vapor Deposition (CVD) growth process.
Type IIa