



**ELECTRONIC COPY**

LG645404867  
Report verification at igi.org



July 31, 2024

IGI Report Number **LG645404867**

Description **LABORATORY GROWN DIAMOND**

Shape and Cutting Style **TRAPEZE STEP CUT**

Measurements **9.59 X 5.63 X 3.38 MM**

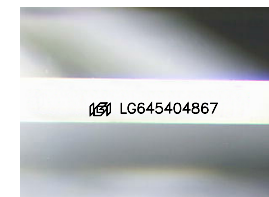
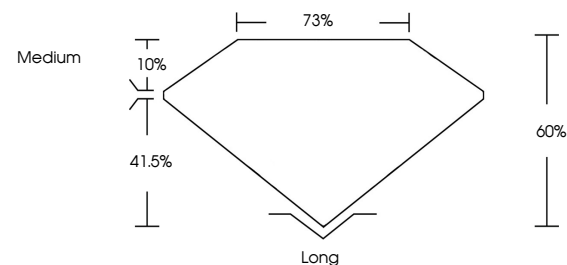
**GRADING RESULTS**

Carat Weight **1.67 CARAT**

Color Grade **E**

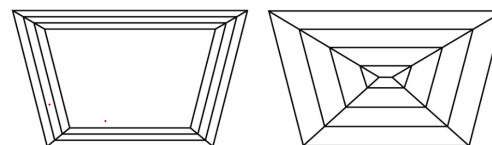
Clarity Grade **VVS 2**

**PROPORTIONS**



Sample Image Used

**CLARITY CHARACTERISTICS**



**KEY TO SYMBOLS**

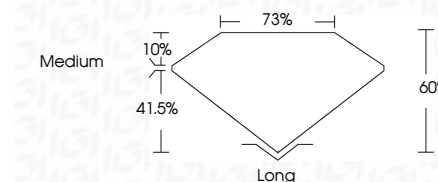
Red symbols indicate internal characteristics.  
Green symbols indicate external characteristics.

**COLOR**

D E F G H I J Faint Very Light Light

**CLARITY**

IF	VS <sup>1-2</sup>	VS <sup>1-2</sup>	SI <sup>1-2</sup>	I <sup>1-3</sup>
Internally Flawless	Very Very Slightly Included	Very Slightly Included	Slightly Included	Included



**ADDITIONAL GRADING INFORMATION**

Polish **VERY GOOD**

Symmetry **EXCELLENT**

Fluorescence **NONE**

Inscription(s) **IGI LG645404867**

Comments: This Laboratory Grown Diamond was created by Chemical Vapor Deposition (CVD) growth process.  
Type IIa



**IGI**



July 31, 2024  
IGI Report No LG645404867  
TRAPEZE STEP CUT  
9.59 X 5.63 X 3.38 MM  
Carat Weight 1.67 CARAT  
Color Grade E  
Clarity Grade VVS 2  
Depth 60%  
Table 73%  
Girdle Medium  
Culet Long  
Polish VERY GOOD  
Symmetry EXCELLENT  
Fluorescence NONE  
Inscription(s) IGI LG645404867  
Comments: This Laboratory Grown Diamond was created by Chemical Vapor Deposition (CVD) growth process.  
Type IIa