



**INTERNATIONAL  
GEMOLOGICAL  
INSTITUTE**

**ELECTRONIC COPY**

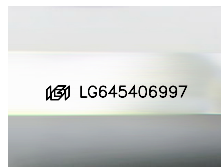
**LG645406997**



August 2, 2024  
**IGI Report Number** LG645406997  
**EMERALD CUT**  
**LABORATORY GROWN DIAMOND**  
**6.10 X 4.48 X 3.19 MM**  
 Carat Weight **0.92 CARAT**  
 Color Grade **E**  
 Clarity Grade **VS 1**  
 Polish **EXCELLENT**  
 Symmetry **EXCELLENT**  
 Fluorescence **NONE**  
 Inscription(s) **IGI LG645406997**

**LABORATORY GROWN DIAMOND REPORT**

August 2, 2024  
 IGI Report Number **LG645406997**  
 Description **LABORATORY GROWN DIAMOND**  
 Shape and Cutting Style **EMERALD CUT**  
 Measurements **6.10 X 4.48 X 3.19 MM**



Sample Image Used

Comments: This Laboratory Grown Diamond was created by Chemical Vapor Deposition (CVD) growth process. Type IIa

**GRADING RESULTS**

Carat Weight **0.92 CARAT**  
 Color Grade **E**  
 Clarity Grade **VS 1**

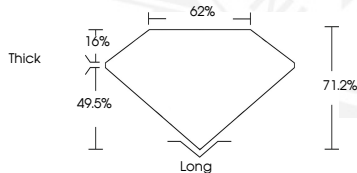
**ADDITIONAL GRADING INFORMATION**

Polish **EXCELLENT**  
 Symmetry **EXCELLENT**  
 Fluorescence **NONE**  
 Inscription(s) **IGI LG645406997**

Comments: This Laboratory Grown Diamond was created by Chemical Vapor Deposition (CVD) growth process. Type IIa



August 2, 2024  
**IGI Report Number** LG645406997  
**EMERALD CUT**  
**LABORATORY GROWN DIAMOND**  
**6.10 X 4.48 X 3.19 MM**  
 Carat Weight **0.92 CARAT**  
 Color Grade **E**  
 Clarity Grade **VS 1**  
 Polish **EXCELLENT**  
 Symmetry **EXCELLENT**  
 Fluorescence **NONE**  
 Inscription(s) **IGI LG645406997**



THIS DOCUMENT WAS PRODUCED WITH THE FOLLOWING SECURITY MEASURES: SPECIAL DOCUMENT PAPER, INK SCREENS, WATERMARK, BACKGROUND DESIGN, HOLOGRAM AND OTHER SECURITY FEATURES NOT LISTED AND DO EXCEED DOCUMENT SECURITY INDUSTRY GUIDELINES.

For terms & conditions and to verify this report, please visit [www.igi.org](http://www.igi.org)