



# INTERNATIONAL GEMOLOGICAL INSTITUTE

ELECTRONIC COPY

LG645407035



August 2, 2024  
 IGI Report Number LG645407035  
 CUT CORNERED RECTANGULAR  
 MODIFIED BRILLIANT  
 LABORATORY GROWN DIAMOND  
 6.13 X 4.05 X 2.53 MM  
 Carat Weight 0.56 CARAT  
 Color Grade F  
 Clarity Grade VS 1  
 Polish VERY GOOD  
 Symmetry EXCELLENT  
 Fluorescence NONE  
 Inscription(s) IGI LG645407035  
 Comments: This Laboratory Grown  
 Diamond was created by  
 Chemical Vapor Deposition (CVD)  
 growth process. Type IIa

## LABORATORY GROWN DIAMOND REPORT

August 2, 2024  
 IGI Report Number LG645407035  
 Description LABORATORY GROWN DIAMOND  
 Shape and Cutting Style CUT CORNERED RECTANGULAR MODIFIED  
 BRILLIANT  
 Measurements 6.13 X 4.05 X 2.53 MM

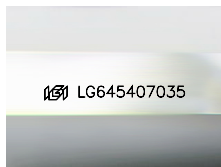
### GRADING RESULTS

Carat Weight 0.56 CARAT  
 Color Grade F  
 Clarity Grade VS 1

### ADDITIONAL GRADING INFORMATION

Polish VERY GOOD  
 Symmetry EXCELLENT  
 Fluorescence NONE  
 Inscription(s) IGI LG645407035

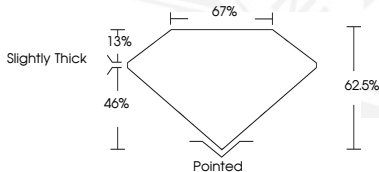
Comments: This Laboratory Grown Diamond was created by  
 Chemical Vapor Deposition (CVD) growth process.  
 Type IIa



Sample Image Used



August 2, 2024  
 IGI Report Number LG645407035  
 CUT CORNERED RECTANGULAR  
 MODIFIED BRILLIANT  
 LABORATORY GROWN DIAMOND  
 6.13 X 4.05 X 2.53 MM  
 Carat Weight 0.56 CARAT  
 Color Grade F  
 Clarity Grade VS 1  
 Polish VERY GOOD  
 Symmetry EXCELLENT  
 Fluorescence NONE  
 Inscription(s) IGI LG645407035  
 Comments: This Laboratory Grown  
 Diamond was created by  
 Chemical Vapor Deposition (CVD)  
 growth process. Type IIa



 THIS DOCUMENT WAS PRODUCED WITH THE FOLLOWING SECURITY MEASURES: SPECIAL DOCUMENT PAPER, INK SCREENS, WATERMARK, BACKGROUND DESIGN, HOLOGRAM AND OTHER SECURITY FEATURES NOT LISTED AND DO EXCEED DOCUMENT SECURITY INDUSTRY GUIDELINES.

For terms & conditions and to verify this report, please visit [www.igi.org](http://www.igi.org)