



ELECTRONIC COPY

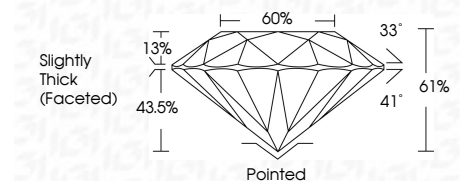
LG645407653
Report verification at igi.org



August 2, 2024
IGI Report Number LG645407653
Description LABORATORY GROWN DIAMOND
Shape and Cutting Style ROUND BRILLIANT
Measurements 8.32 - 8.34 X 5.08 MM

GRADING RESULTS

Carat Weight 2.20 CARATS
Color Grade E
Clarity Grade VVS 2
Cut Grade EXCELLENT

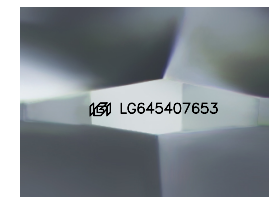


ADDITIONAL GRADING INFORMATION

Polish EXCELLENT
Symmetry EXCELLENT
Fluorescence NONE
Inscription(s) IGI LG645407653
Comments: This Laboratory Grown Diamond was created by Chemical Vapor Deposition (CVD) growth process. Type IIa

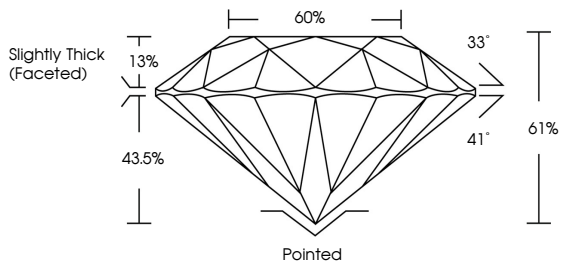


August 2, 2024
IGI Report No LG645407653
ROUND BRILLIANT
8.32 - 8.34 X 5.08 MM
2.20 CARATS E
Color Grade VVS 2
Clarity Grade EXCELLENT
Depth 61%
Table 60%
Girdle Slightly Thick (Faceted)
Culet Pointed
Polish EXCELLENT
Symmetry EXCELLENT
Fluorescence NONE
Inscription(s) IGI LG645407653
Comments: This Laboratory Grown Diamond was created by Chemical Vapor Deposition (CVD) growth process. Type IIa

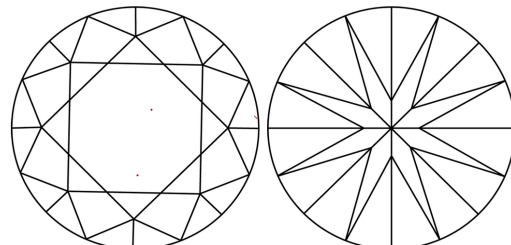


Sample Image Used

PROPORTIONS



CLARITY CHARACTERISTICS



KEY TO SYMBOLS

Red symbols indicate internal characteristics.
Green symbols indicate external characteristics.

COLOR

D E F G H I J Faint Very Light Light

CLARITY

IF VVS 1-2 VS 1-2 SI 1-2 I 1-3
Internally Flawless Very Very Slightly Included Very Slightly Included Slightly Included Included

