



# INTERNATIONAL GEMOLOGICAL INSTITUTE

LG645408033  
Report verification at igi.org

## LIGHT PERFORMANCE REPORT

Light Performance Grade: **Exceptional**



Ideal-Scope representation

Low Moderate High Superior Exceptional

### Light Performance



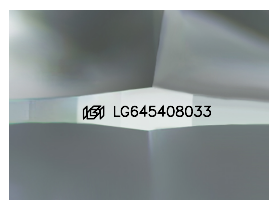
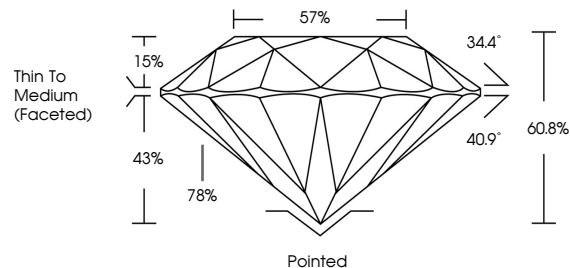
### COLOR

D E F G H I J Faint Very Light Light

### CLARITY

IF	VS <sup>1-2</sup>	VS <sup>1-2</sup>	SI <sup>1-2</sup>	I <sup>1-3</sup>
Internally Flawless	Very Very Slightly Included	Very Slightly Included	Slightly Included	Included

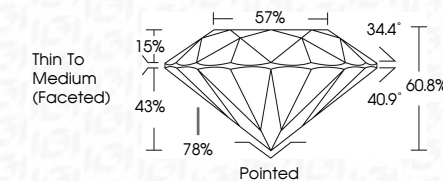
### PROPORTIONS



Sample Image Used



July 31, 2024  
 IGI Report Number **LG645408033**  
 Description **LABORATORY GROWN DIAMOND**  
 Shape and Cutting Style **ROUND BRILLIANT**  
 Measurements **7.70 - 7.72 X 4.69 MM**  
**GRADING RESULTS**  
 Carat Weight **1.68 CARAT**  
 Color Grade **E**  
 Clarity Grade **VVS 2**  
 Cut Grade **IDEAL**



**ADDITIONAL GRADING INFORMATION**  
 Polish **EXCELLENT**  
 Symmetry **EXCELLENT**  
 Fluorescence **NONE**  
 Inscription(s) **IGI LG645408033**  
 Comments: HEARTS & ARROWS  
 This Laboratory Grown Diamond was created by Chemical Vapor Deposition (CVD) growth process. Type IIa



## ELECTRONIC COPY LABORATORY GROWN DIAMOND REPORT

July 31, 2024  
 IGI Report Number **LG645408033**  
 Description **LABORATORY GROWN DIAMOND**  
 Shape and Cutting Style **ROUND BRILLIANT**  
 Measurements **7.70 - 7.72 x 4.69 mm**

**GRADING RESULTS**  
 Carat Weight **1.68 CARAT**  
 Color Grade **E**  
 Clarity Grade **VVS 2**  
 Cut Grade **IDEAL**

**ADDITIONAL GRADING INFORMATION**  
 Polish **EXCELLENT**  
 Symmetry **EXCELLENT**  
 Fluorescence **NONE**  
 Inscription(s) **IGI LG645408033**

Comments: HEARTS & ARROWS  
 This Laboratory Grown Diamond was created by Chemical Vapor Deposition (CVD) growth process. Type IIa



July 31, 2024  
 IGI Report No **LG645408033**  
**ROUND BRILLIANT**  
**7.70 - 7.72 X 4.69 MM**  
 Carat Weight **1.68 CARAT**  
 Color Grade **E**  
 Clarity Grade **VVS 2**  
 Cut Grade **IDEAL**  
 Depth **60.8%**  
 Table **57%**  
 Girdle **Thin To Medium (Faceted)**  
 Culet **Pointed**  
 Polish **EXCELLENT**  
 Symmetry **EXCELLENT**  
 Fluorescence **NONE**  
 Inscription(s) **IGI LG645408033**  
 Comments: HEARTS & ARROWS  
 This Laboratory Grown Diamond was created by Chemical Vapor Deposition (CVD) growth process. Type IIa