



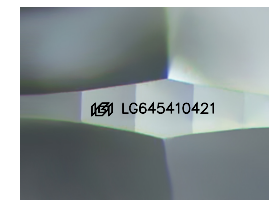
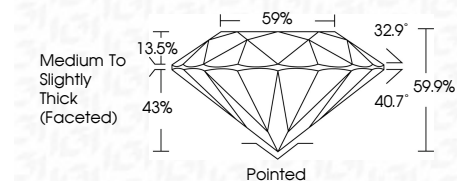
ELECTRONIC COPY

LG645410421
Report verification at igi.org



August 2, 2024
IGI Report Number LG645410421
Description LABORATORY GROWN DIAMOND
Shape and Cutting Style ROUND BRILLIANT
Measurements 7.36 - 7.41 X 4.43 MM

GRADING RESULTS
Carat Weight 1.49 CARAT
Color Grade D
Clarity Grade VS 1
Cut Grade IDEAL



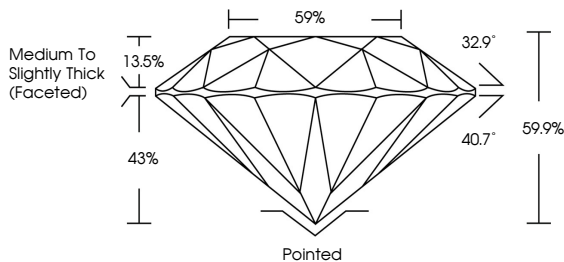
Sample Image Used

ADDITIONAL GRADING INFORMATION
Polish EXCELLENT
Symmetry EXCELLENT
Fluorescence NONE
Inscription(s) IGI LG645410421
Comments: As Grown - No indication of post-growth treatment.
This Laboratory Grown Diamond was created by High Pressure High Temperature (HPHT) growth process.
Type II

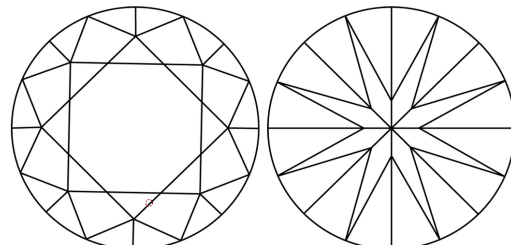


August 2, 2024
IGI Report No LG645410421
ROUND BRILLIANT
7.36 - 7.41 X 4.43 MM
1.49 CARAT
D
VS 1
IDEAL
59.9%
59%
Medium To Slightly Thick (Faceted)
Pointed
EXCELLENT
EXCELLENT
NONE
IGI LG645410421
Comments: As Grown - No indication of post-growth treatment.
This Laboratory Grown Diamond was created by High Pressure High Temperature (HPHT) growth process.
Type II

PROPORTIONS



CLARITY CHARACTERISTICS



KEY TO SYMBOLS
Red symbols indicate internal characteristics.
Green symbols indicate external characteristics.

Table with 10 columns: D, E, F, G, H, I, J, Faint, Very Light, Light

Table with 5 columns: IF, VS 1-2, VS 1-2, SI 1-2, I 1-3
Internally Flawless, Very Very Slightly Included, Very Slightly Included, Slightly Included, Included

