



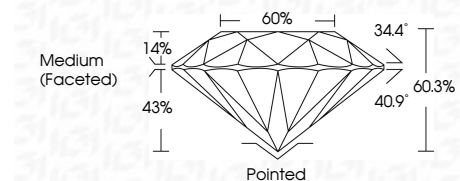
ELECTRONIC COPY

LG645411621
Report verification at igi.org



August 1, 2024
IGI Report Number LG645411621
Description LABORATORY GROWN DIAMOND
Shape and Cutting Style ROUND BRILLIANT
Measurements 8.21 - 8.23 X 4.96 MM

GRADING RESULTS
Carat Weight 2.06 CARATS
Color Grade F
Clarity Grade VS 1
Cut Grade IDEAL



ADDITIONAL GRADING INFORMATION
Polish EXCELLENT
Symmetry EXCELLENT
Fluorescence NONE
Inscription(s) IGI LG645411621
Comments: This Laboratory Grown Diamond was created by Chemical Vapor Deposition (CVD) growth process. Type IIa



August 1, 2024
IGI Report No LG645411621
ROUND BRILLIANT
8.21 - 8.23 X 4.96 MM
2.06 CARATS
F
VS 1
IDEAL
60.3%
60%
Medium (Faceted)
Pointed
EXCELLENT
EXCELLENT
NONE
IGI LG645411621
Comments: This Laboratory Grown Diamond was created by Chemical Vapor Deposition (CVD) growth process. Type IIa

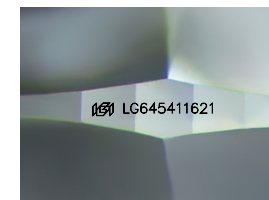
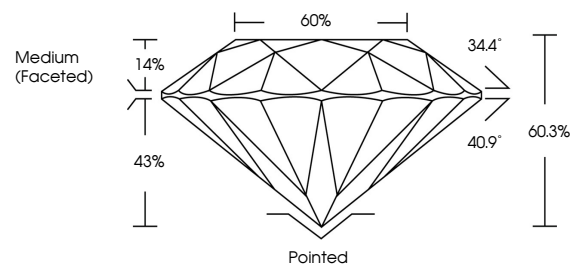
August 1, 2024
IGI Report Number LG645411621
Description LABORATORY GROWN DIAMOND
Shape and Cutting Style ROUND BRILLIANT
Measurements 8.21 - 8.23 X 4.96 MM

GRADING RESULTS
Carat Weight 2.06 CARATS
Color Grade F
Clarity Grade VS 1
Cut Grade IDEAL

ADDITIONAL GRADING INFORMATION
Polish EXCELLENT
Symmetry EXCELLENT
Fluorescence NONE
Inscription(s) IGI LG645411621

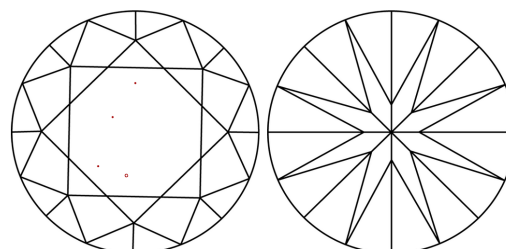
Comments: This Laboratory Grown Diamond was created by Chemical Vapor Deposition (CVD) growth process. Type IIa

PROPORTIONS



Sample Image Used

CLARITY CHARACTERISTICS



KEY TO SYMBOLS

Red symbols indicate internal characteristics.
Green symbols indicate external characteristics.

COLOR

D E F G H I J Faint Very Light Light

CLARITY

IF VS 1-2 VS 1-2 SI 1-2 I 1-3
Internally Flawless Very Very Slightly Included Very Slightly Included Slightly Included Included

