



ELECTRONIC COPY

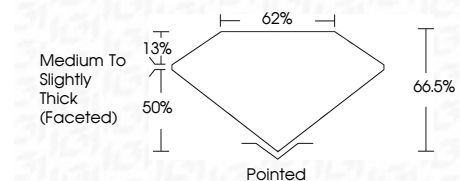
LG645411695
Report verification at igi.org



August 2, 2024
IGI Report Number **LG645411695**
Description **LABORATORY GROWN DIAMOND**
Shape and Cutting Style **SQUARE CUSHION BRILLIANT**
Measurements **7.75 X 7.59 X 5.05 MM**

GRADING RESULTS

Carat Weight **2.35 CARATS**
Color Grade **F**
Clarity Grade **VVS 2**



ADDITIONAL GRADING INFORMATION

Polish **EXCELLENT**
Symmetry **EXCELLENT**
Fluorescence **NONE**
Inscription(s) **IGI LG645411695**
Comments: This Laboratory Grown Diamond was created by Chemical Vapor Deposition (CVD) growth process. Type IIa



August 2, 2024
IGI Report No **LG645411695**
SQUARE CUSHION BRILLIANT
7.75 X 7.59 X 5.05 MM
2.35 CARATS
F
VVS 2
66.5%
62%
Medium to Slightly Thick (Faceted)
Pointed
EXCELLENT
EXCELLENT
NONE
IGI LG645411695
Comments: This Laboratory Grown Diamond was created by Chemical Vapor Deposition (CVD) growth process. Type IIa

LABORATORY GROWN DIAMOND REPORT

August 2, 2024
IGI Report Number **LG645411695**
Description **LABORATORY GROWN DIAMOND**
Shape and Cutting Style **SQUARE CUSHION BRILLIANT**
Measurements **7.75 X 7.59 X 5.05 MM**

GRADING RESULTS

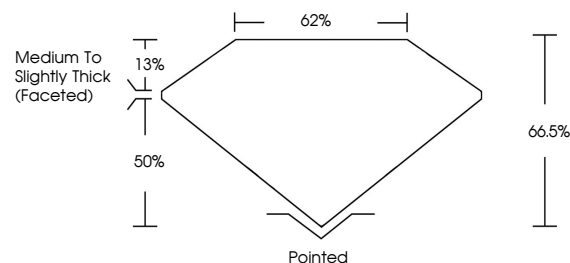
Carat Weight **2.35 CARATS**
Color Grade **F**
Clarity Grade **VVS 2**

ADDITIONAL GRADING INFORMATION

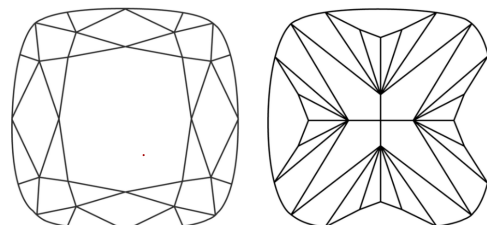
Polish **EXCELLENT**
Symmetry **EXCELLENT**
Fluorescence **NONE**
Inscription(s) **IGI LG645411695**

Comments: This Laboratory Grown Diamond was created by Chemical Vapor Deposition (CVD) growth process. Type IIa

PROPORTIONS

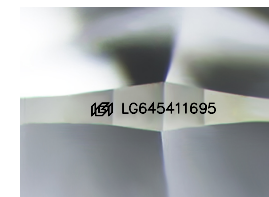


CLARITY CHARACTERISTICS



KEY TO SYMBOLS

Red symbols indicate internal characteristics.
Green symbols indicate external characteristics.



Sample Image Used

COLOR

D E F G H I J Faint Very Light Light

CLARITY

| | | | | |
|---------------------|-----------------------------|------------------------|-------------------|------------------|
| IF | VS ¹⁻² | VS ¹⁻² | SI ¹⁻² | I ¹⁻³ |
| Internally Flawless | Very Very Slightly Included | Very Slightly Included | Slightly Included | Included |

