



**ELECTRONIC COPY**

LG645413136  
Report verification at igi.org



August 8, 2024  
IGI Report Number **LG645413136**  
Description **LABORATORY GROWN DIAMOND**  
Shape and Cutting Style **CUSHION BRILLIANT**  
Measurements **8.96 X 7.56 X 5.21 MM**  
**GRADING RESULTS**  
Carat Weight **3.26 CARATS**  
Color Grade **FANCY VIVID PINK**  
Clarity Grade **VS 1**

August 8, 2024  
IGI Report Number **LG645413136**  
Description **LABORATORY GROWN DIAMOND**  
Shape and Cutting Style **CUSHION BRILLIANT**  
Measurements **8.96 X 7.56 X 5.21 MM**

**GRADING RESULTS**

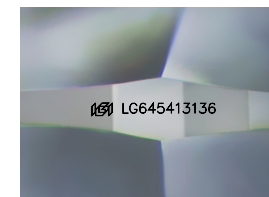
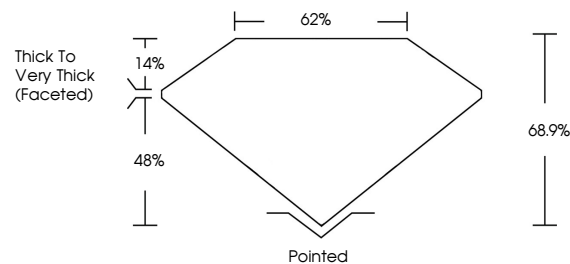
Carat Weight **3.26 CARATS**  
Color Grade **FANCY VIVID PINK**  
Clarity Grade **VS 1**

**ADDITIONAL GRADING INFORMATION**

Polish **EXCELLENT**  
Symmetry **EXCELLENT**  
Fluorescence **SLIGHT**  
Inscription(s) **LG645413136**

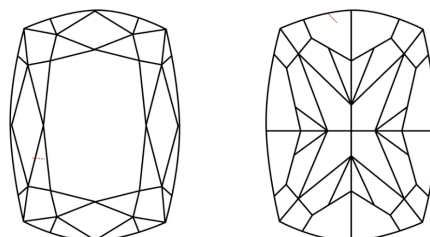
Comments: This Laboratory Grown Diamond was created by Chemical Vapor Deposition (CVD) growth process.  
Indications of post-growth treatment.

**PROPORTIONS**



Sample Image Used

**CLARITY CHARACTERISTICS**



**KEY TO SYMBOLS**

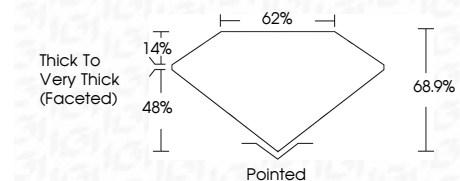
Red symbols indicate internal characteristics.  
Green symbols indicate external characteristics.

**COLOR**

D E F G H I J Faint Very Light Light

**CLARITY**

IF	VS <sup>1-2</sup>	VS <sup>1-2</sup>	SI <sup>1-2</sup>	I <sup>1-3</sup>
Internally Flawless	Very Very Slightly Included	Very Slightly Included	Slightly Included	Included



**ADDITIONAL GRADING INFORMATION**

Polish **EXCELLENT**  
Symmetry **EXCELLENT**  
Fluorescence **SLIGHT**  
Inscription(s) **LG645413136**  
Comments: This Laboratory Grown Diamond was created by Chemical Vapor Deposition (CVD) growth process.  
Indications of post-growth treatment.



August 8, 2024  
IGI Report No **LG645413136**  
**CUSHION BRILLIANT**  
**3.26 CARATS**  
Carat Weight **FANCY VIVID PINK**  
Color Grade **VS 1**  
Clarity Grade **68.9%**  
Depth **62%**  
Table  
Girdle  
Thick to Very Thick (Faceted)  
Culet  
Pointed  
Polish **EXCELLENT**  
Symmetry **EXCELLENT**  
Fluorescence **SLIGHT**  
Inscription(s) **LG645413136**  
Comments: This Laboratory Grown Diamond was created by Chemical Vapor Deposition (CVD) growth process.  
Indications of post-growth treatment.