



ELECTRONIC COPY

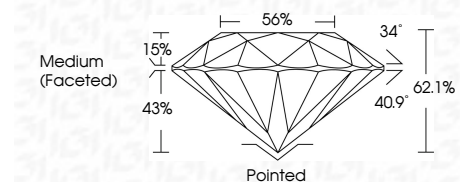
LG645413188
Report verification at igi.org



August 2, 2024
IGI Report Number LG645413188
Description LABORATORY GROWN DIAMOND
Shape and Cutting Style ROUND BRILLIANT
Measurements 8.08 - 8.11 X 5.02 MM

GRADING RESULTS

Carat Weight 2.03 CARATS
Color Grade E
Clarity Grade SI 1
Cut Grade IDEAL



ADDITIONAL GRADING INFORMATION

Polish EXCELLENT
Symmetry EXCELLENT
Fluorescence NONE
Inscription(s) IGI LG645413188
Comments: As Grown - No indication of post-growth treatment.
This Laboratory Grown Diamond was created by High Pressure High Temperature (HPHT) growth process.
Type II



August 2, 2024
IGI Report No LG645413188
ROUND BRILLIANT
8.08 - 8.11 X 5.02 MM
2.03 CARATS E
SI 1 IDEAL
62.1% 56%
Medium (Faceted)
Pointed EXCELLENT
Symmetry EXCELLENT
Fluorescence NONE
Inscription(s) IGI LG645413188
Comments: As Grown - No indication of post-growth treatment.
This Laboratory Grown Diamond was created by High Pressure High Temperature (HPHT) growth process.
Type II

August 2, 2024
IGI Report Number LG645413188
Description LABORATORY GROWN DIAMOND
Shape and Cutting Style ROUND BRILLIANT
Measurements 8.08 - 8.11 X 5.02 MM

GRADING RESULTS

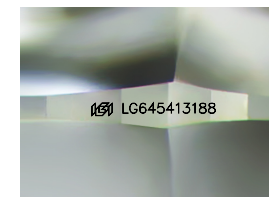
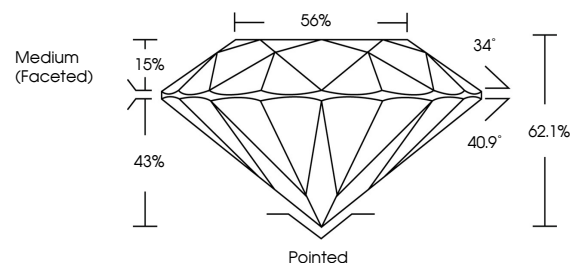
Carat Weight 2.03 CARATS
Color Grade E
Clarity Grade SI 1
Cut Grade IDEAL

ADDITIONAL GRADING INFORMATION

Polish EXCELLENT
Symmetry EXCELLENT
Fluorescence NONE
Inscription(s) IGI LG645413188

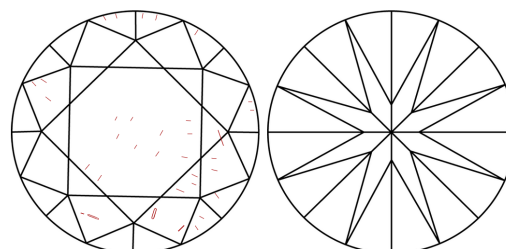
Comments: As Grown - No indication of post-growth treatment.
This Laboratory Grown Diamond was created by High Pressure High Temperature (HPHT) growth process.
Type II

PROPORTIONS



Sample Image Used

CLARITY CHARACTERISTICS



KEY TO SYMBOLS

Red symbols indicate internal characteristics.
Green symbols indicate external characteristics.

COLOR

D E F G H I J Faint Very Light Light

CLARITY

IF VS 1-2 VS 1-2 SI 1-2 I 1-3
Internally Flawless Very Very Slightly Included Very Slightly Included Slightly Included Included