



**ELECTRONIC COPY**

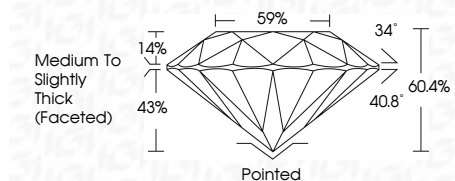
LG645418330  
Report verification at igi.org



August 23, 2024  
IGI Report Number **LG645418330**  
Description **LABORATORY GROWN DIAMOND**  
Shape and Cutting Style **ROUND BRILLIANT**  
Measurements **8.13 - 8.20 X 4.94 MM**

**GRADING RESULTS**

Carat Weight **2.01 CARATS**  
Color Grade **E**  
Clarity Grade **VVS 2**  
Cut Grade **VERY GOOD**

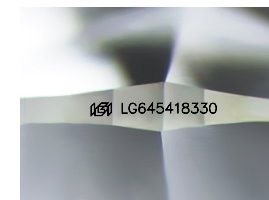


**ADDITIONAL GRADING INFORMATION**

Polish **GOOD**  
Symmetry **VERY GOOD**  
Fluorescence **NONE**  
Inscription(s) **IGI LG645418330**  
Comments: This Laboratory Grown Diamond was created by Chemical Vapor Deposition (CVD) growth process. Type IIa

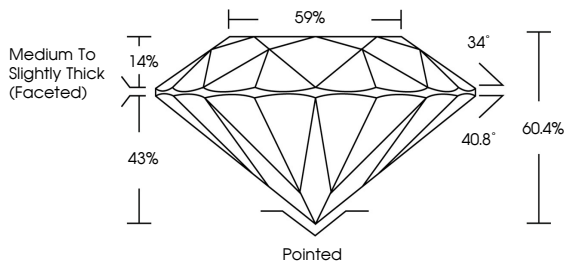


August 23, 2024  
IGI Report No LG645418330  
**ROUND BRILLIANT**  
8.13 - 8.20 X 4.94 MM  
2.01 CARATS  
E  
VVS 2  
VERY GOOD  
60.4%  
59%  
Medium To Slightly Thick (Faceted)  
Pointed  
GOOD  
VERY GOOD  
NONE  
IGI LG645418330  
Comments: This Laboratory Grown Diamond was created by Chemical Vapor Deposition (CVD) growth process. Type IIa

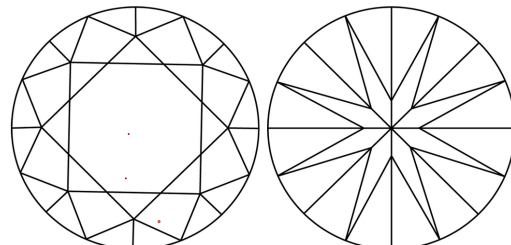


Sample Image Used

**PROPORTIONS**



**CLARITY CHARACTERISTICS**



**KEY TO SYMBOLS**

Red symbols indicate internal characteristics.  
Green symbols indicate external characteristics.

**COLOR**

D E F G H I J Faint Very Light Light

**CLARITY**

IF WS<sup>1-2</sup> VS<sup>1-2</sup> SI<sup>1-2</sup> I<sup>1-3</sup>  
Internally Flawless Very Very Slightly Included Very Slightly Included Slightly Included Included

