



ELECTRONIC COPY

LG645418995
Report verification at igi.org



August 27, 2024
IGI Report Number LG645418995
Description LABORATORY GROWN DIAMOND
Shape and Cutting Style ROUND BRILLIANT
Measurements 7.91 - 7.99 X 4.88 MM
GRADING RESULTS
Carat Weight 1.95 CARAT
Color Grade F
Clarity Grade VS 1
Cut Grade VERY GOOD

LABORATORY GROWN DIAMOND REPORT

August 27, 2024
IGI Report Number LG645418995
Description LABORATORY GROWN DIAMOND
Shape and Cutting Style ROUND BRILLIANT
Measurements 7.91 - 7.99 X 4.88 MM

GRADING RESULTS

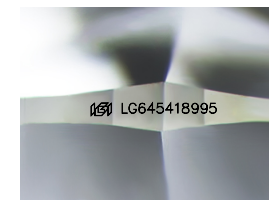
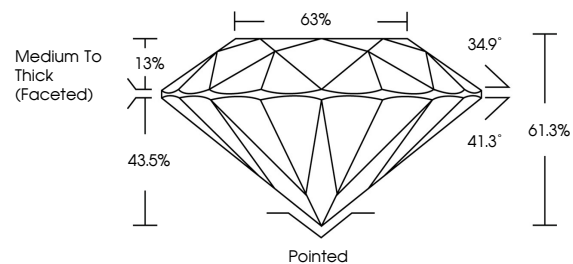
Carat Weight 1.95 CARAT
Color Grade F
Clarity Grade VS 1
Cut Grade VERY GOOD

ADDITIONAL GRADING INFORMATION

Polish VERY GOOD
Symmetry VERY GOOD
Fluorescence NONE
Inscription(s) IGI LG645418995

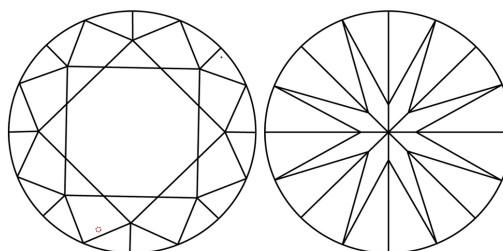
Comments: This Laboratory Grown Diamond was created by Chemical Vapor Deposition (CVD) growth process. Type IIa

PROPORTIONS



Sample Image Used

CLARITY CHARACTERISTICS



KEY TO SYMBOLS

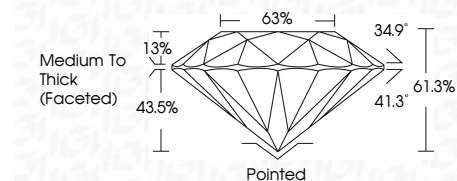
Red symbols indicate internal characteristics.
Green symbols indicate external characteristics.

COLOR

D E F G H I J Faint Very Light Light

CLARITY

IF WS 1-2 VS 1-2 SI 1-2 I 1-3
Internally Flawless Very Very Slightly Included Very Slightly Included Slightly Included Included



ADDITIONAL GRADING INFORMATION

Polish VERY GOOD
Symmetry VERY GOOD
Fluorescence NONE
Inscription(s) IGI LG645418995
Comments: This Laboratory Grown Diamond was created by Chemical Vapor Deposition (CVD) growth process. Type IIa



August 27, 2024
IGI Report No LG645418995
ROUND BRILLIANT
1.95 CARAT F
VERY GOOD VS 1
61.3% 63%
Medium To Thick (Faceted)
Pointed
VERY GOOD
VERY GOOD
NONE
IGI LG645418995
Comments: This Laboratory Grown Diamond was created by Chemical Vapor Deposition (CVD) growth process. Type IIa