



ELECTRONIC COPY

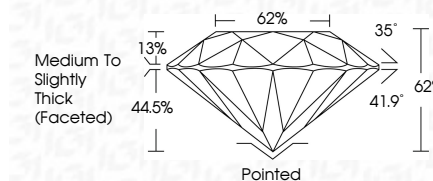
LG645419031
Report verification at igi.org



August 27, 2024
IGI Report Number **LG645419031**
Description **LABORATORY GROWN DIAMOND**
Shape and Cutting Style **ROUND BRILLIANT**
Measurements **8.03 - 8.07 X 4.99 MM**

GRADING RESULTS

Carat Weight **2.00 CARATS**
Color Grade **F**
Clarity Grade **VS 1**
Cut Grade **VERY GOOD**

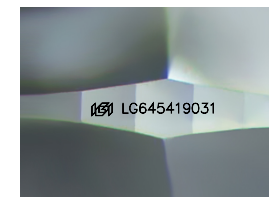


ADDITIONAL GRADING INFORMATION

Polish **GOOD**
Symmetry **GOOD**
Fluorescence **NONE**
Inscription(s) **IGI LG645419031**
Comments: This Laboratory Grown Diamond was created by Chemical Vapor Deposition (CVD) growth process. Type IIa

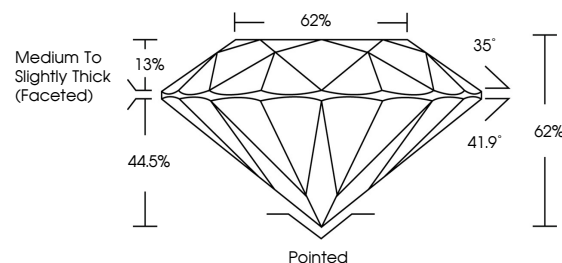


August 27, 2024
IGI Report No LG645419031
ROUND BRILLIANT
8.03 - 8.07 X 4.99 MM
2.00 CARATS
Color Grade **F**
Clarity Grade **VS 1**
Depth **62%**
Table **62%**
Girdle **Medium To Slightly Thick (Faceted)**
Culet **Pointed**
Polish **GOOD**
Symmetry **GOOD**
Fluorescence **NONE**
Inscription(s) **IGI LG645419031**
Comments: This Laboratory Grown Diamond was created by Chemical Vapor Deposition (CVD) growth process. Type IIa

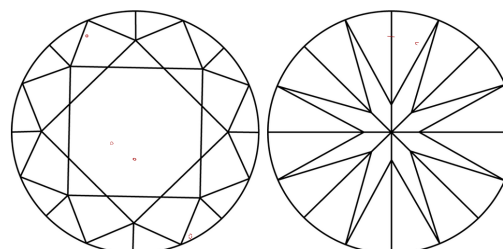


Sample Image Used

PROPORTIONS



CLARITY CHARACTERISTICS



KEY TO SYMBOLS

Red symbols indicate internal characteristics.
Green symbols indicate external characteristics.

COLOR

D E F G H I J Faint Very Light Light

CLARITY

IF WS¹⁻² VS¹⁻² SI¹⁻² I¹⁻³

Internally Flawless Very Very Slightly Included Very Slightly Included Slightly Included Included

