



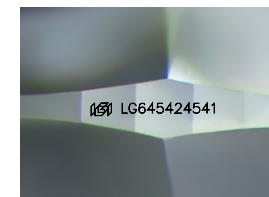
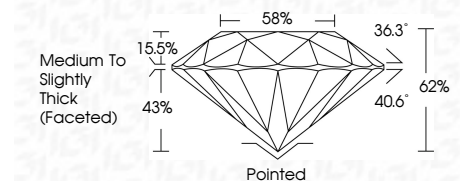
ELECTRONIC COPY

LG645424541
Report verification at igi.org



August 1, 2024
IGI Report Number LG645424541
Description LABORATORY GROWN DIAMOND
Shape and Cutting Style ROUND BRILLIANT
Measurements 8.74 - 8.74 X 5.42 MM

GRADING RESULTS
Carat Weight 2.57 CARATS
Color Grade E
Clarity Grade VS 1
Cut Grade EXCELLENT



Sample Image Used

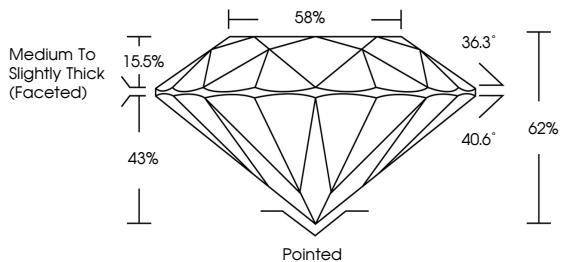
ADDITIONAL GRADING INFORMATION
Polish EXCELLENT
Symmetry EXCELLENT
Fluorescence NONE
Inscription(s) IGI LG645424541
Comments: This Laboratory Grown Diamond was created by Chemical Vapor Deposition (CVD) growth process. Type IIa



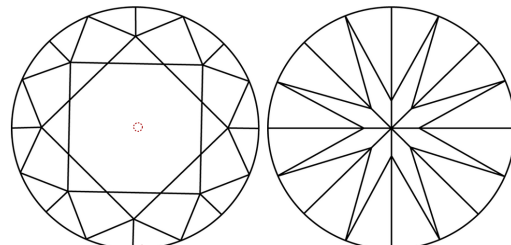
August 1, 2024
IGI Report No LG645424541
ROUND BRILLIANT
8.74 - 8.74 X 5.42 MM
2.57 CARATS E
Color Grade EXCELLENT
Clarity Grade VS 1
Depth 62%
Table 86%
Medium To Slightly Thick (Faceted)
Pointed EXCELLENT
Cut Grade EXCELLENT
Symmetry EXCELLENT
Fluorescence NONE
Inscriptions(s) IGI LG645424541
Comments: This Laboratory Grown Diamond was created by Chemical Vapor Deposition (CVD) growth process. Type IIa

August 1, 2024
IGI Report Number LG645424541
Description LABORATORY GROWN DIAMOND
Shape and Cutting Style ROUND BRILLIANT
Measurements 8.74 - 8.74 X 5.42 MM
GRADING RESULTS
Carat Weight 2.57 CARATS
Color Grade E
Clarity Grade VS 1
Cut Grade EXCELLENT
ADDITIONAL GRADING INFORMATION
Polish EXCELLENT
Symmetry EXCELLENT
Fluorescence NONE
Inscription(s) IGI LG645424541

PROPORTIONS



CLARITY CHARACTERISTICS



KEY TO SYMBOLS
Red symbols indicate internal characteristics.
Green symbols indicate external characteristics.

COLOR

Table with color grades: D, E, F, G, H, I, J, Faint, Very Light, Light

CLARITY

Table with clarity grades: IF, VS 1-2, VS 1-2, SI 1-2, I 1-3, Internally Flawless, Very Very Slightly Included, Very Slightly Included, Slightly Included, Included

