



**ELECTRONIC COPY**

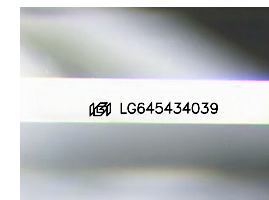
LG645434039  
Report verification at igi.org



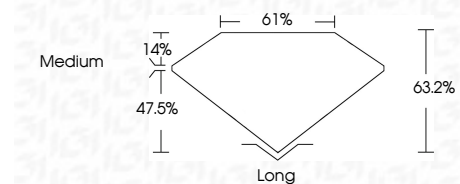
August 21, 2024  
IGI Report Number **LG645434039**  
Description **LABORATORY GROWN DIAMOND**  
Shape and Cutting Style **EMERALD CUT**  
Measurements **9.17 X 6.31 X 3.99 MM**

**GRADING RESULTS**

Carat Weight **2.21 CARATS**  
Color Grade **E**  
Clarity Grade **VVS 2**



Sample Image Used



**ADDITIONAL GRADING INFORMATION**

Polish **EXCELLENT**  
Symmetry **EXCELLENT**  
Fluorescence **NONE**  
Inscription(s) **IGI LG645434039**  
Comments: This Laboratory Grown Diamond was created by Chemical Vapor Deposition (CVD) growth process. Type IIa



August 21, 2024  
IGI Report No **LG645434039**  
**EMERALD CUT**  
9.17 X 6.31 X 3.99 MM  
2.21 CARATS  
E  
VVS 2  
63.2%  
14%  
47.5%  
Medium  
Long  
EXCELLENT  
EXCELLENT  
NONE  
IGI LG645434039  
Comments: This Laboratory Grown Diamond was created by Chemical Vapor Deposition (CVD) growth process. Type IIa

**LABORATORY GROWN DIAMOND REPORT**

August 21, 2024  
IGI Report Number **LG645434039**  
Description **LABORATORY GROWN DIAMOND**  
Shape and Cutting Style **EMERALD CUT**  
Measurements **9.17 X 6.31 X 3.99 MM**

**GRADING RESULTS**

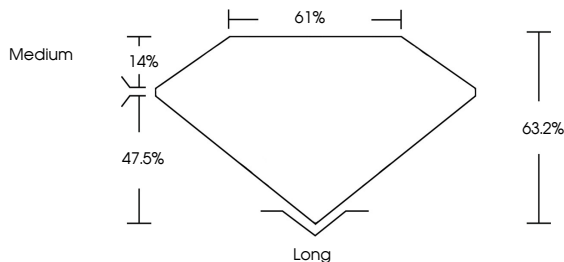
Carat Weight **2.21 CARATS**  
Color Grade **E**  
Clarity Grade **VVS 2**

**ADDITIONAL GRADING INFORMATION**

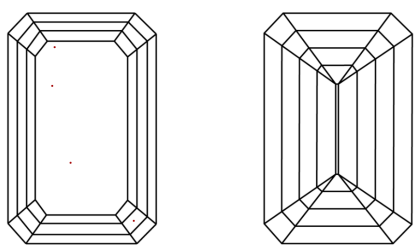
Polish **EXCELLENT**  
Symmetry **EXCELLENT**  
Fluorescence **NONE**  
Inscription(s) **IGI LG645434039**

Comments: This Laboratory Grown Diamond was created by Chemical Vapor Deposition (CVD) growth process. Type IIa

**PROPORTIONS**



**CLARITY CHARACTERISTICS**



**KEY TO SYMBOLS**

Red symbols indicate internal characteristics.  
Green symbols indicate external characteristics.

**COLOR**

D	E	F	G	H	I	J	Faint	Very Light	Light
---	---	---	---	---	---	---	-------	------------	-------

**CLARITY**

IF	VVS <sup>1-2</sup>	VS <sup>1-2</sup>	SI <sup>1-2</sup>	I <sup>1-3</sup>
Internally Flawless	Very Very Slightly Included	Very Slightly Included	Slightly Included	Included

