



ELECTRONIC COPY

LG645434046 Report verification at igi.org



August 21, 2024
IGI Report Number LG645434046
Description LABORATORY GROWN DIAMOND
Shape and Cutting Style ROUND BRILLIANT
Measurements 8.84 - 8.85 X 5.39 MM
GRADING RESULTS
Carat Weight 2.59 CARATS
Color Grade E
Clarity Grade VVS 2
Cut Grade IDEAL

August 21, 2024
IGI Report Number LG645434046
Description LABORATORY GROWN DIAMOND
Shape and Cutting Style ROUND BRILLIANT
Measurements 8.84 - 8.85 X 5.39 MM

GRADING RESULTS

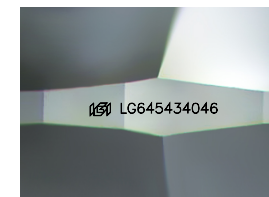
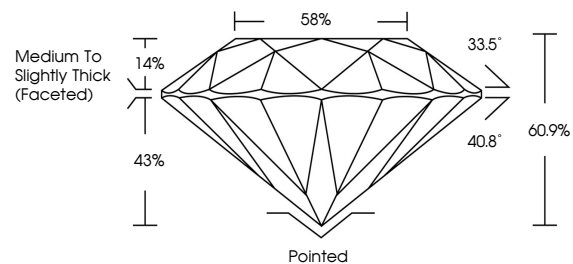
Carat Weight 2.59 CARATS
Color Grade E
Clarity Grade VVS 2
Cut Grade IDEAL

ADDITIONAL GRADING INFORMATION

Polish EXCELLENT
Symmetry EXCELLENT
Fluorescence NONE
Inscription(s) IGI LG645434046

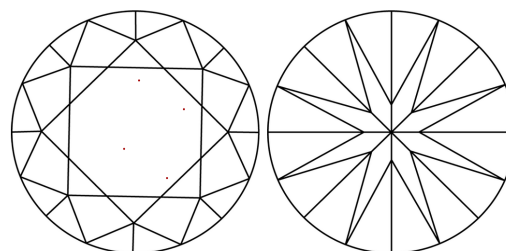
Comments: This Laboratory Grown Diamond was created by Chemical Vapor Deposition (CVD) growth process. Type IIa

PROPORTIONS



Sample Image Used

CLARITY CHARACTERISTICS



KEY TO SYMBOLS

Red symbols indicate internal characteristics.
Green symbols indicate external characteristics.

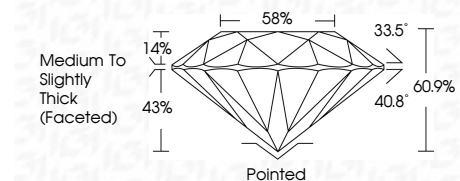
COLOR

D E F G H I J Faint Very Light Light

CLARITY

IF VS 1-2 VS 1-2 SI 1-2 I 1-3

Internally Flawless Very Very Slightly Included Very Slightly Included Slightly Included Included



ADDITIONAL GRADING INFORMATION

Polish EXCELLENT
Symmetry EXCELLENT
Fluorescence NONE
Inscription(s) IGI LG645434046
Comments: This Laboratory Grown Diamond was created by Chemical Vapor Deposition (CVD) growth process. Type IIa



Summary table: August 21, 2024, IGI Report No LG645434046, ROUND BRILLIANT, 8.84 - 8.85 X 5.39 MM, 2.59 CARATS, E, VVS 2, IDEAL, 60.9%, 58%, Medium To Slightly Thick (Faceted), Polished EXCELLENT, Symmetry EXCELLENT, Fluorescence NONE, Inscription(s) IGI LG645434046. Comments: This Laboratory Grown Diamond was created by Chemical Vapor Deposition (CVD) growth process. Type IIa