



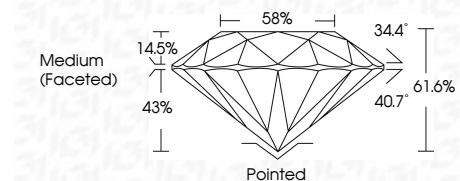
ELECTRONIC COPY

LG645434567 Report verification at igi.org



August 3, 2024 IGI Report Number LG645434567 Description LABORATORY GROWN DIAMOND Shape and Cutting Style ROUND BRILLIANT Measurements 8.24 - 8.18 X 5.04 MM

GRADING RESULTS Carat Weight 2.10 CARATS Color Grade E Clarity Grade VS 2 Cut Grade IDEAL



ADDITIONAL GRADING INFORMATION Polish EXCELLENT Symmetry EXCELLENT Fluorescence NONE Inscription(s) IGI LG645434567 Comments: This Laboratory Grown Diamond was created by Chemical Vapor Deposition (CVD) growth process. Type IIa



Summary table with columns: August 3, 2024, IGI Report No LG645434567, ROUND BRILLIANT, 8.24 - 8.18 X 5.04 MM, 2.10 CARATS, E, VS 2, IDEAL, 61.6%, 58%, Medium (Faceted), Pointed, EXCELLENT, EXCELLENT, NONE, IGI LG645434567

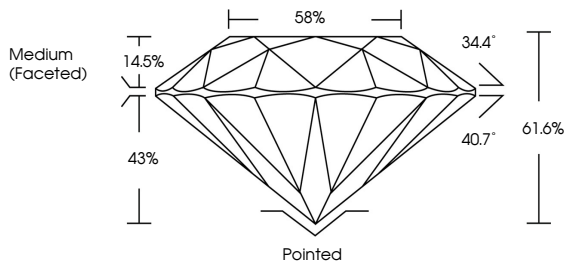
August 3, 2024 IGI Report Number LG645434567 Description LABORATORY GROWN DIAMOND Shape and Cutting Style ROUND BRILLIANT Measurements 8.24 - 8.18 X 5.04 MM

GRADING RESULTS Carat Weight 2.10 CARATS Color Grade E Clarity Grade VS 2 Cut Grade IDEAL

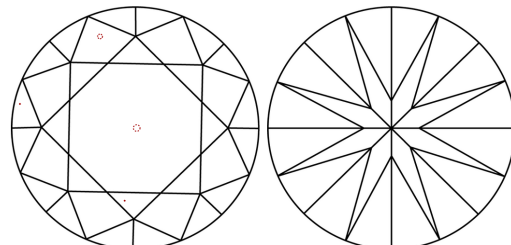
ADDITIONAL GRADING INFORMATION Polish EXCELLENT Symmetry EXCELLENT Fluorescence NONE Inscription(s) IGI LG645434567

Comments: This Laboratory Grown Diamond was created by Chemical Vapor Deposition (CVD) growth process. Type IIa

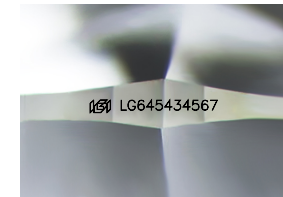
PROPORTIONS



CLARITY CHARACTERISTICS



KEY TO SYMBOLS Red symbols indicate internal characteristics. Green symbols indicate external characteristics.



Sample Image Used

COLOR scale: D E F G H I J Faint Very Light Light

CLARITY scale: IF VS 1-2 VS 1-2 SI 1-2 I 1-3 Internally Flawless Very Very Slightly Included Very Slightly Included Slightly Included Included

