



ELECTRONIC COPY

LG645434841
Report verification at igi.org



August 3, 2024

IGI Report Number **LG645434841**

Description **LABORATORY GROWN DIAMOND**

Shape and Cutting Style **ROUND BRILLIANT**

Measurements **9.07 - 9.06 X 5.64 MM**

GRADING RESULTS

Carat Weight **2.90 CARATS**

Color Grade **E**

Clarity Grade **VS 1**

Cut Grade **IDEAL**

August 3, 2024

IGI Report Number **LG645434841**

Description **LABORATORY GROWN DIAMOND**

Shape and Cutting Style **ROUND BRILLIANT**

Measurements **9.07 - 9.06 X 5.64 MM**

GRADING RESULTS

Carat Weight **2.90 CARATS**

Color Grade **E**

Clarity Grade **VS 1**

Cut Grade **IDEAL**

ADDITIONAL GRADING INFORMATION

Polish **EXCELLENT**

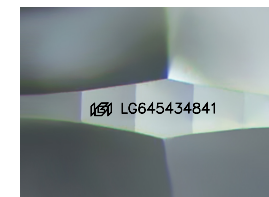
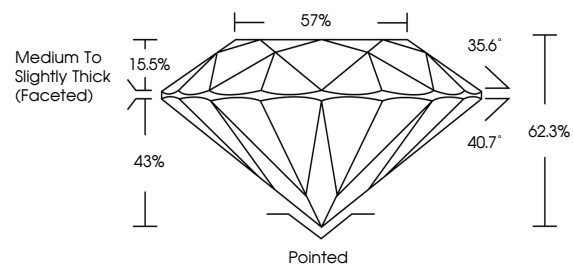
Symmetry **EXCELLENT**

Fluorescence **NONE**

Inscription(s) **LG645434841**

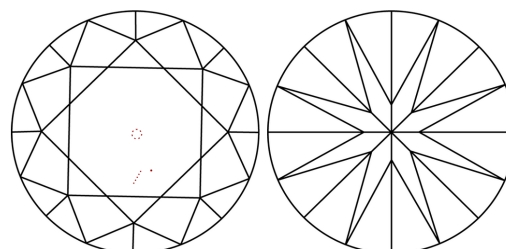
Comments: This Laboratory Grown Diamond was created by Chemical Vapor Deposition (CVD) growth process.
Type IIa

PROPORTIONS



Sample Image Used

CLARITY CHARACTERISTICS



KEY TO SYMBOLS

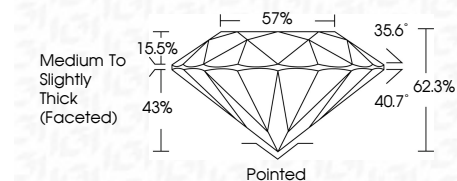
Red symbols indicate internal characteristics.
Green symbols indicate external characteristics.

COLOR

D E F G H I J Faint Very Light Light

CLARITY

IF	VS ¹⁻²	VS ¹⁻²	SI ¹⁻²	I ¹⁻³
Internally Flawless	Very Very Slightly Included	Very Slightly Included	Slightly Included	Included



ADDITIONAL GRADING INFORMATION

Polish **EXCELLENT**

Symmetry **EXCELLENT**

Fluorescence **NONE**

Inscription(s) **LG645434841**

Comments: This Laboratory Grown Diamond was created by Chemical Vapor Deposition (CVD) growth process.
Type IIa



IGI



August 3, 2024
IGI Report No **LG645434841**
ROUND BRILLIANT

2.90 CARATS
E

9.07 - 9.06 X 5.64 MM
IDEAL
62.3%
57%
Medium To Slightly Thick (Faceted)

Pointed
EXCELLENT
EXCELLENT
NONE
None
IGI LG645434841

Cut: Polished
Polish: EXCELLENT
Symmetry: EXCELLENT
Fluorescence: NONE
Inscriptions(s): IGI LG645434841

Comments: This Laboratory Grown Diamond was created by Chemical Vapor Deposition (CVD) growth process.
Type IIa