



ELECTRONIC COPY

LG645435579
Report verification at igi.org



August 10, 2024
IGI Report Number LG645435579
Description LABORATORY GROWN DIAMOND
Shape and Cutting Style CUT CORNERED RECTANGULAR MODIFIED BRILLIANT
Measurements 12.21 X 8.60 X 5.65 MM
GRADING RESULTS
Carat Weight 5.21 CARATS
Color Grade FANCY INTENSE PINK
Clarity Grade VVS 2

LABORATORY GROWN DIAMOND REPORT

August 10, 2024
IGI Report Number LG645435579
Description LABORATORY GROWN DIAMOND
Shape and Cutting Style CUT CORNERED RECTANGULAR MODIFIED BRILLIANT
Measurements 12.21 X 8.60 X 5.65 MM

GRADING RESULTS

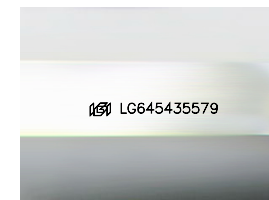
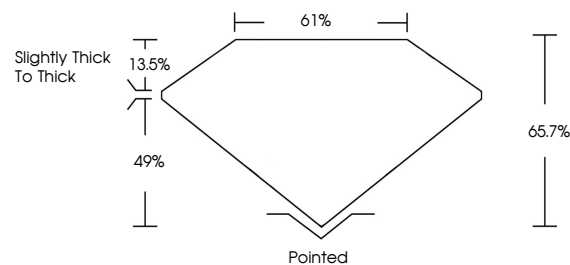
Carat Weight 5.21 CARATS
Color Grade FANCY INTENSE PINK
Clarity Grade VVS 2

ADDITIONAL GRADING INFORMATION

Polish EXCELLENT
Symmetry EXCELLENT
Fluorescence SLIGHT
Inscription(s) LG645435579

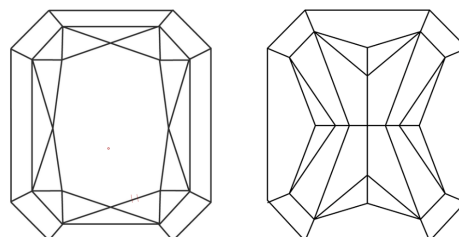
Comments: This Laboratory Grown Diamond was created by Chemical Vapor Deposition (CVD) growth process.
Indications of post-growth treatment.

PROPORTIONS



Sample Image Used

CLARITY CHARACTERISTICS



KEY TO SYMBOLS

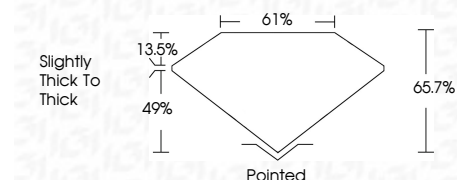
Red symbols indicate internal characteristics.
Green symbols indicate external characteristics.

COLOR

D E F G H I J Faint Very Light Light

CLARITY

Table mapping clarity grades (IF, VVS 1-2, VS 1-2, SI 1-2, I 1-3) to their descriptions (Internally Flawless, Very Very Slightly Included, Very Slightly Included, Slightly Included, Included).



ADDITIONAL GRADING INFORMATION

Polish EXCELLENT
Symmetry EXCELLENT
Fluorescence SLIGHT
Inscription(s) LG645435579
Comments: This Laboratory Grown Diamond was created by Chemical Vapor Deposition (CVD) growth process.
Indications of post-growth treatment.



August 10, 2024
IGI Report No LG645435579
CUT CORNERED RECT. MODIFIED BRILLIANT
12.21 X 8.60 X 5.65 MM
5.21 CARATS
FANCY INTENSE PINK
VVS 2
65.7%
61%
Slightly Thick To Thick
Pointed
EXCELLENT
EXCELLENT
SLIGHT
LG645435579
Comments: This Laboratory Grown Diamond was created by Chemical Vapor Deposition (CVD) growth process.
Indications of post-growth treatment.