



ELECTRONIC COPY

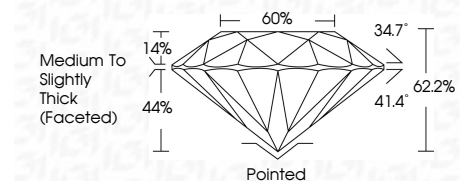
LG645453079
Report verification at igi.org



July 26, 2024
IGI Report Number LG645453079
Description LABORATORY GROWN DIAMOND
Shape and Cutting Style ROUND BRILLIANT
Measurements 8.03 - 8.06 X 5.00 MM

GRADING RESULTS

Carat Weight 2.01 CARATS
Color Grade F
Clarity Grade VS 2
Cut Grade EXCELLENT

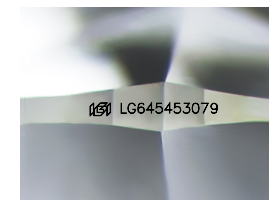


ADDITIONAL GRADING INFORMATION

Polish EXCELLENT
Symmetry EXCELLENT
Fluorescence NONE
Inscription(s) IGI LG645453079
Comments: This Laboratory Grown Diamond was created by Chemical Vapor Deposition (CVD) growth process. Type IIa

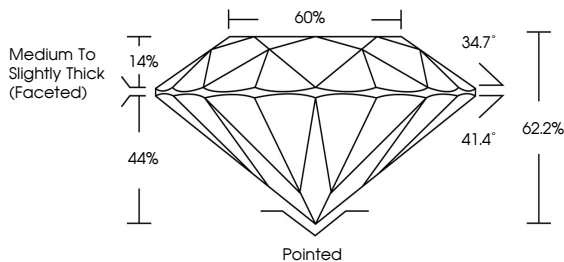


July 26, 2024
IGI Report No LG645453079
ROUND BRILLIANT
8.03 - 8.06 X 5.00 MM
2.01 CARATS
Color Grade F
Clarity Grade VS 2
Cut Grade EXCELLENT
Depth 62.2%
Table 60%
Medium To Slightly Thick (Faceted)
Culet Pointed
Polish EXCELLENT
Symmetry EXCELLENT
Fluorescence NONE
Inscriptions(s) IGI LG645453079
Comments: This Laboratory Grown Diamond was created by Chemical Vapor Deposition (CVD) growth process. Type IIa

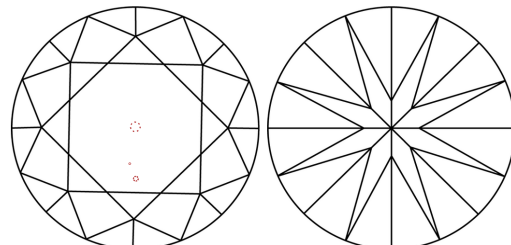


Sample Image Used

PROPORTIONS



CLARITY CHARACTERISTICS



KEY TO SYMBOLS

Red symbols indicate internal characteristics.
Green symbols indicate external characteristics.

COLOR

D E F G H I J Faint Very Light Light

CLARITY

IF VS 1-2 VS 1-2 SI 1-2 I 1-3
Internally Flawless Very Very Slightly Included Very Slightly Included Slightly Included Included

