



ELECTRONIC COPY

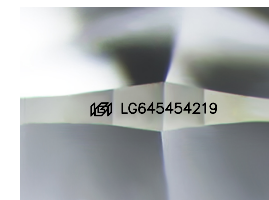
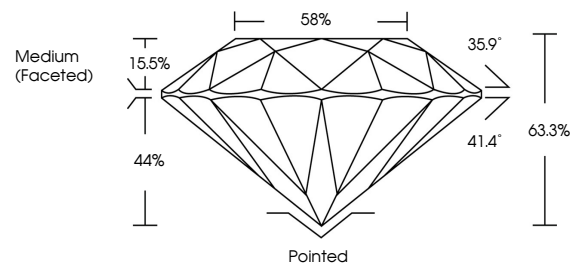
LG645454219
Report verification at igi.org



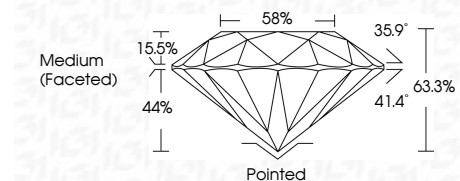
July 26, 2024
IGI Report Number: LG645454219
Description: LABORATORY GROWN DIAMOND
Shape and Cutting Style: ROUND BRILLIANT
Measurements: 8.09 - 8.11 X 5.13 MM
GRADING RESULTS
Carat Weight: 2.09 CARATS
Color Grade: E
Clarity Grade: VVS 2
Cut Grade: EXCELLENT

July 26, 2024
IGI Report Number: LG645454219
Description: LABORATORY GROWN DIAMOND
Shape and Cutting Style: ROUND BRILLIANT
Measurements: 8.09 - 8.11 X 5.13 MM

PROPORTIONS



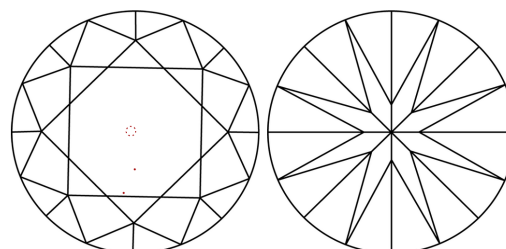
Sample Image Used



GRADING RESULTS

Carat Weight: 2.09 CARATS
Color Grade: E
Clarity Grade: VVS 2
Cut Grade: EXCELLENT

CLARITY CHARACTERISTICS



ADDITIONAL GRADING INFORMATION

Polish: EXCELLENT
Symmetry: EXCELLENT
Fluorescence: NONE
Inscription(s): IGI LG645454219

ADDITIONAL GRADING INFORMATION

Polish: EXCELLENT
Symmetry: EXCELLENT
Fluorescence: NONE
Inscription(s): IGI LG645454219
Comments: This Laboratory Grown Diamond was created by Chemical Vapor Deposition (CVD) growth process. Type IIa

COLOR

D E F G H I J Faint Very Light Light

CLARITY

IF VVS 1-2 VS 1-2 SI 1-2 I 1-3
Internally Flawless Very Very Slightly Included Very Slightly Included Slightly Included Included

KEY TO SYMBOLS

Red symbols indicate internal characteristics.
Green symbols indicate external characteristics.



July 26, 2024
IGI Report No. LG645454219
ROUND BRILLIANT
8.09 - 8.11 X 5.13 MM
2.09 CARATS
E
VVS 2
EXCELLENT
63.3%
58%
Medium (Faceted)
Pointed
EXCELLENT
EXCELLENT
NONE
IGI LG645454219
Comments: This Laboratory Grown Diamond was created by Chemical Vapor Deposition (CVD) growth process. Type IIa